

Inspiring Design | Exceptional Results



Your local specialist since 1984

[www.ashfordkitchensandinteriors.co.uk](http://www.ashfordkitchensandinteriors.co.uk)

Farnham Common Showroom 1-2 The Parade, Farnham Common, Bucks SL2 3QJ 01753 642362 | Ashford Showroom 85 Church Road, Ashford, Middlesex TW15 2PE 01784 245964



# Bespoke Kitchens, Bedrooms, and Home Living Designs

We specialise in the design, supply, project coordination and installation of quality fitted kitchens, bedrooms and Home Living spaces. We showcase our extensive range of bespoke designs and beautifully crafted products and materials in our two large and inspiring showrooms in Ashford, Middlesex & Farnham Common, Buckinghamshire.

Serving customers across Berkshire, Buckinghamshire, Middlesex, Surrey and the surrounding areas since 1984, our family-run business is dedicated to ensuring our customers are satisfied with every step of the process; from our very first meeting, to the day your installation is complete and beyond.

Our friendly team of designers, project coordinators, installers, and specialist tradespeople are on hand to provide top class, professional service, providing exceptional results to turn your house into your dream home.

We pride ourselves on supporting you every step of the way, helping to make your experience with us exciting, enjoyable and straightforward. After many years in the industry, we remain a truly local, friendly business. We want to welcome you to our showrooms in Ashford, Middlesex, and Farnham Common, Buckinghamshire, to take a look at our inspirational displays. Choose Ashford Kitchens & Interiors to bring your new kitchen, bedroom, or home office to life!

**Ready to start your interior project with us?** Book your complimentary design consultation with us today or request a call back.



SCAN ME FOR MORE





# Contents

|                                   |         |
|-----------------------------------|---------|
| • Our Ethos                       | Page 4  |
| • Our Projects                    | Page 5  |
| • Meet The Team                   | Page 6  |
| <hr/>                             |         |
| • Kitchens - Shaker & Traditional | Page 10 |
| • Kitchens - Handleless & Modern  | Page 52 |
| <hr/>                             |         |
| • Kitchens - Features             | Page 74 |





# Ashford Kitchens & Interiors

Ashford  
Kitchens & Interiors

Appliances

Inspiring Design | Exceptional Results

Ashford  
Kitchens & Interiors

Monday - Saturday

9.30am - 5pm

01753 642362

[www.ashfordinteriors.co.uk](http://www.ashfordinteriors.co.uk)

Kitchens

Bedrooms

Home Office



## Our Ethos

Our philosophy is to improve our customers' lives through interior design. We provide a comprehensive design, supply and installation service, and pride ourselves on being with you from conception to completion, making your experience with us friendly, efficient, and professional. We are passionate about creating living spaces that meet individual needs and that can be enjoyed with family and friends for many years to come. We offer a wide range of different collections including both modern and traditional designs. Every kitchen we design is created to be stylish and functional whilst making the most of your space, always taking a personal approach to bringing to life your dream kitchen.

We are proud that our kitchens are made to order here in England using the very best techniques. Each kitchen is crafted with love, skill, and attention using the finest materials and components.

After many years in the industry, we remain a truly local, friendly, family-run business. Our dedicated team of designers, project coordinators, installers and specialist tradespeople will go above and beyond to ensure you're satisfied with the service you receive from quotation to completion. As we continue to grow, our dedicated team has expanded over the years, but we stay true to our ethos, and we will always endeavour to ensure you receive the best possible service throughout your kitchen project.





# Our Projects

With every project we complete, we love seeing how redesigning living spaces have improved our customers' lifestyles. Our vast range of collections can transform day-to-day life.

We continue to strive and perfect our service; it is our aim to make client relationships and communication convenient, friendly, and professional. For this reason, feedback and testimonials are of the highest value to us. We have completed several thousand installations in and around the local area over the last four decades and a large amount of our work is thanks to word of mouth and recommendations. We are very proud of the beautiful kitchens we have completed.

We are excited to showcase these in our very own Ashford Kitchens Brochure. Enjoy!

Kitchens | Bedrooms | Home Living





## Meet The Team

Say hello to our team of experienced and friendly professionals who are on hand to provide knowledgeable, impartial, and constructive advice, with a genuine and friendly approach and top-class service at the heart of everything we do. We strive to provide a seamless and efficient service, making communications and rapport straightforward from day one, so that you will be delighted with the end result. Visit one of our showrooms in Ashford, Middlesex, or Farnham Common, Buckinghamshire, to start your experience and receive more information from our helpful team.

Our dedicated, specialist installation teams and project coordinators will work closely together to offer you the best service before, during, and after your installation.

Ashford's genuine, friendly, and helpful team will always be on hand to show you around. You may even get to meet Winnie, our showroom dog and star of our show!



### Amy

Amy is our Showroom and Admin Manager at our Farnham Common showroom. She joined the team in 2018 and enjoys helping customers envision their new home project. She also manages the company's social media presence, where she showcases her brilliant creative flare and what we get up to day to day. Amy loves taking her beagle, Lola, on long walks at the weekend.



### Dan

Dan is both the Operations Manager for the business and the General Manager for our Farnham Common showroom. With over two decades of industry experience, Dan's highly organised skill set ensures the exceptional standard of completion for all our installations. He enjoys visiting clients' homes and seeing the progression of their projects and the transformative results upon completion. On weekends, you'll likely find Dan enjoying quality time with his family or refining his golf skills on the course!



### Dipesh

Dipesh is our Project Coordinator at the Farnham Common showroom. Dipesh is hands-on, regularly visiting sites to monitor progress and address challenges promptly. His commitment to excellence in project coordination is evident in his proactive role and attention to detail. In his spare time, Dipesh swaps project timelines for a tennis racket, showcasing his dynamic and adaptable nature even in his personal pursuits. He is also a big Formula 1 fan!





## Ellen

Ellen is our Showroom Advisor & Admin Assistant at the Ashford showroom. She has a passion for inspiring clients by showcasing the possibilities for their dream kitchen, bedroom, or office. Ellen's friendly voice serves as a reassuring presence on the other end of the phone, addressing all client needs with warmth and expertise. In her spare time, Ellen is a keen walker, often taking brisk walks during lunch breaks.



## Fran

Fran, our Junior Designer at the Farnham Common Showroom, embraces the diversity of her role, enjoying the opportunity to bring people's dream interiors to life. With a degree in Design, Fran brings a unique perspective and genuine passion to her work with creativity and a keen eye for detail. Outside the showroom, she indulges in her love for shopping and moments spent with her family.



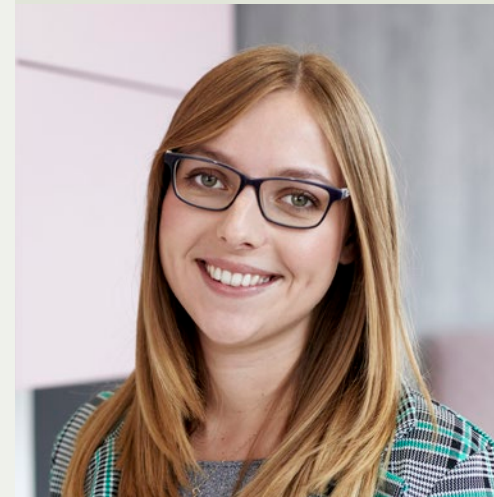
## Grace

Grace, our Owner and Marketing Director, brings her passion for interior design and home improvements to the forefront. Having joined the family business alongside Steve in 2011, Grace finds immense satisfaction in the completion of beautiful projects. She is immensely proud of their two showrooms, the calibre of their teams and of the service they provide and is always looking to improve this. Grace enjoys moments spent with her family and running around after her 3 young boys.



## Guy

Guy is one of our Directors & General Manager at our Ashford showroom. He joined the company in 2012 and is brother-in-law to Stephen & Grace. He has a keen eye for detail and problem solving, always ensuring customers are delighted with the finished result. He is the practical joker in the office and always has a dad joke handy! When Guy doesn't have a coffee in his hand, he enjoys playing football with his three boys and loves a relaxing cycle ride!



## Izzy

Izzy, our Showroom & Marketing Manager, is located at our Ashford showroom. Having been with the company since 2014, Izzy brings a wealth of experience and enthusiasm to our team. With a commitment to enhancing our online presence, Izzy continuously explores innovative strategies to connect with clients. Her passion for delivering exceptional customer service is evident in every interaction. Outside of the showroom, Izzy is an avid walker, often seizing her lunch breaks to maximize her step count.



## Phil

Phil is our Sales & Design Manager and brings a wealth of experience and knowledge to the business having worked in kitchen design since 2010. The attention to detail Phil has gained over the years helps him to design dream kitchens and bedrooms even in the most challenging spaces. Outside of the showroom, Phil is not just a kitchen enthusiast professionally but also a keen cook personally and loves experimenting with new vegan meal ideas for friends and family!





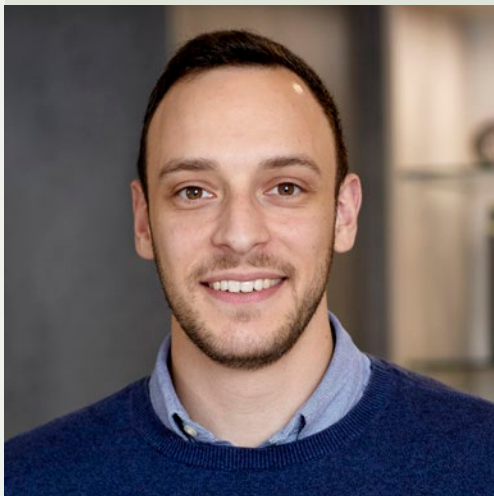
## Richard

Richard founded Ashford Kitchens & Interiors back in 1984 with his wife Tracey. In 1980 Richard worked for a large furniture store and was put in charge of a new kitchen department. From then on, Richard knew there was something in this new trend of kitchen specialists, that he wanted to be part of. Four years later he acquired premises in Ashford and never looked back! In his spare time, Richard has a passion for cycling and has been on many cycling trips in France.



## Ryan

Ryan began his career as a designer before transitioning to his current role as Project Coordinator at our Ashford showroom. With his design background, he brings a creative perspective and an eye for detail to every project he manages. He enjoys visiting sites and overseeing fitters to ensure that every detail meets our high standards. Outside of work, Ryan enjoys running, football, and traveling.



## Sam

Sam is our Senior Designer at Farnham Common and joined the team in 2015. His passion lies in creating dream kitchens and bedrooms for clients. With his excellent creativity and attention to detail he creates beautiful spaces that our clients can enjoy for years to come. Outside the showroom, Sam finds joy in his free time by walking his lively cockapoo, Cooper, who you will see from time to time in the showroom!



## Scott

Scott is our Senior Designer based at our Ashford showroom and has a degree in interior design. He has been designing kitchens and bedrooms since 2014. Always prioritising the perfect blend of creativity and functionality, Scott is guided by his client's unique vision in every project. Scott enjoys competing in CrossFit competitions in his spare time, which includes weightlifting and gymnastics!



## Shannon

Shannon is one of our Project Co-ordinators at our Ashford showroom. Shannon previously worked as a kitchen designer and enjoys ensuring the smooth running of our projects. She loves seeing the finished result. Prior to kitchens Shannon was International Cabin Crew, travelling all over to Singapore, Shanghai, Sydney and Philadelphia to name a few! In her spare time Shannon loves watching true crime documentaries and going to the gym.



## Stephen

Steve is the Owner & Managing Director. He enjoys designing kitchens and thrives on modernising interior spaces as he strongly believes that a great well designed living space will improve your lifestyle! Steve has over 20 years of experience and his family have always been in the industry so it's in his blood! Steve started his career as a Kitchen Planner with the John Lewis Partnership before joining his family business in 2010. In his spare time Steve enjoys playing football with his 3 boys, running in Burnham Beeches and racing on his Peloton bike.





## Steve B

Steve B has been in the industry since 2004, bringing his extensive experience in sales and design, including time designing kitchens at John Lewis, to his role as Project Coordinator at our Farnham Common branch. Known for his methodical approach and attention to detail, he ensures every project runs smoothly. Outside of work, Steve enjoys football and traveling, with plans for more adventures in the future.



## Steve S

Steve Strange, our in-house fitter who seamlessly moves between showrooms, brings over a decade of kitchen installation expertise. A friendly face in our customers' homes, Steve adds a personal touch to every project, ensuring a positive experience. Known as our "Biscuit fiend," Steve takes brief breaks between jobs to savour a cuppa and a biccyl!



## Tracey

Tracey founded the business with her husband Richard in 1984. Throughout the years Tracey has overseen the accounts of the business and has helped with the day to day running of installations. Tracey keeps a close eye on the finances and should be credited for the sound financial stability of the company. During her spare time Tracey enjoys swimming and spending time with her six grandsons.



## Yaqub

Yaqub is a designer working across both showrooms, bringing experience from the fashion industry. He excels at researching interior trends, viewing design as "dressing" a home and believes thoughtful design enhances the living experience, making spaces both functional and beautiful. Outside of work, he enjoys staying active, exploring new foods, and has a passion for wildlife, often incorporating natural activities into his travels.



## Zoe

Zoe is our Showroom Advisor & Admin Assistant at the Farnham Common showroom. Zoe's positive attitude, dedication, and creative flair undoubtedly contribute to the positive experience she provides customers seeking inspiration for their home improvement projects. In her spare time, Zoe likes to unwind by spending time with her friends and family.



## Winnie

Meet Winnie, our charming office dog, who has been a part of our showroom family since her puppy days. As an adorable cockapoo, Winnie's days are filled with joy, long walks in the park, and the affectionate belly rubs she receives from our clients in the showroom. Winnie isn't just a furry companion; she's a little celebrity with a budding acting career. Her playful demeanour and photogenic charm make her a star in our frequent photoshoots.



The Shaker kitchen embodies timeless simplicity with its distinctive square-framed design, minimal detailing, and enduring British appeal. A true classic, it creates orderly, clutter-free spaces that balance style and practicality. Adding to this charm, classic kitchen features like tongue-and-groove cabinetry, feature mantels, and dressers bring heritage-inspired character. These kitchens offer a warm, inviting atmosphere while meeting the demands of modern family life.



Request an appointment



# Kitchens Shaker & Traditional







Monarch Limestone









Sovereign Indigo Blue









Edwardian Painted  
Cashmere









Sterling Painted  
Oxford Blue









Sand Oak  
Wood Shaker







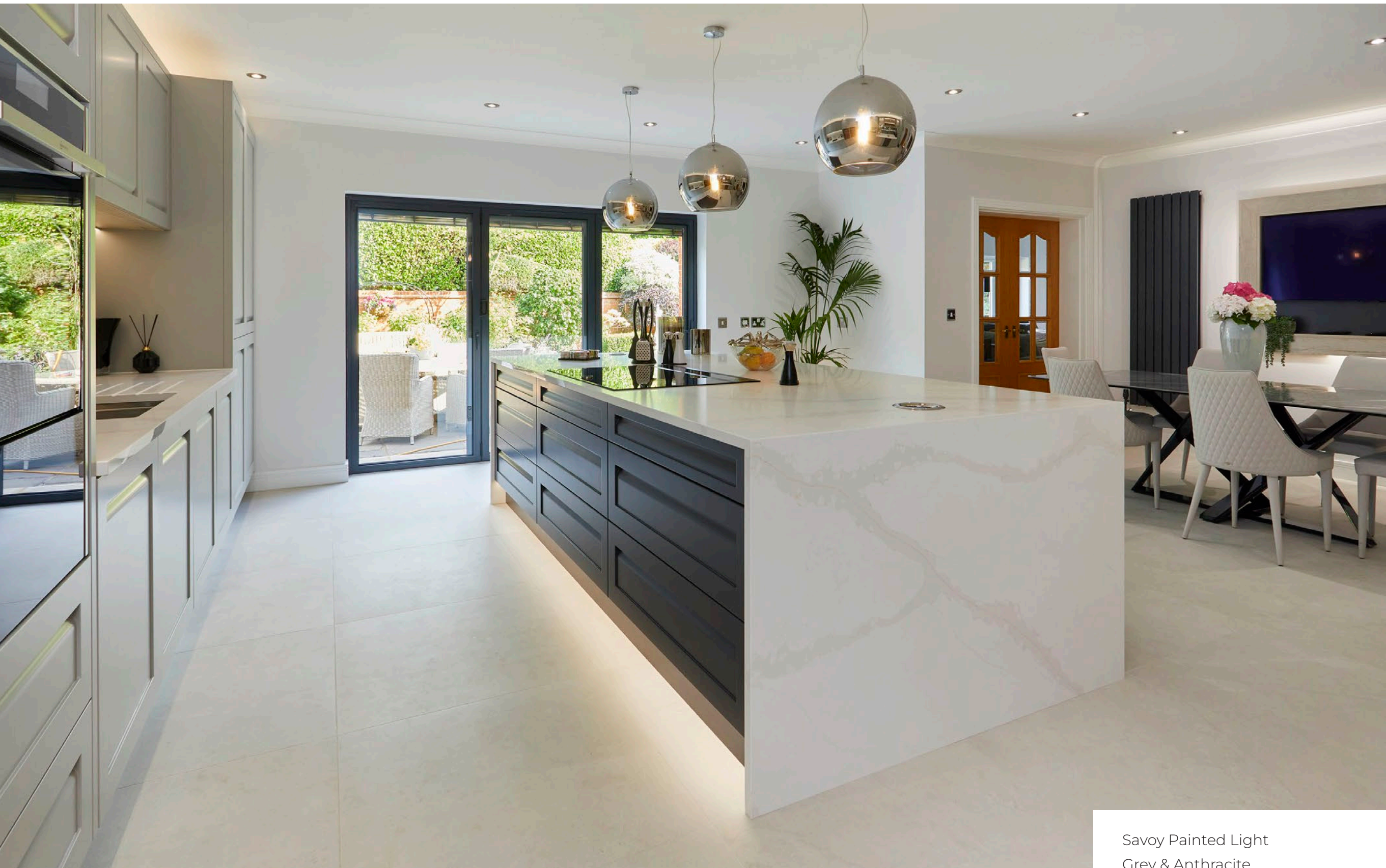


Monarch Light Grey  
& Botanical Green









Savoy Painted Light  
Grey & Anthracite



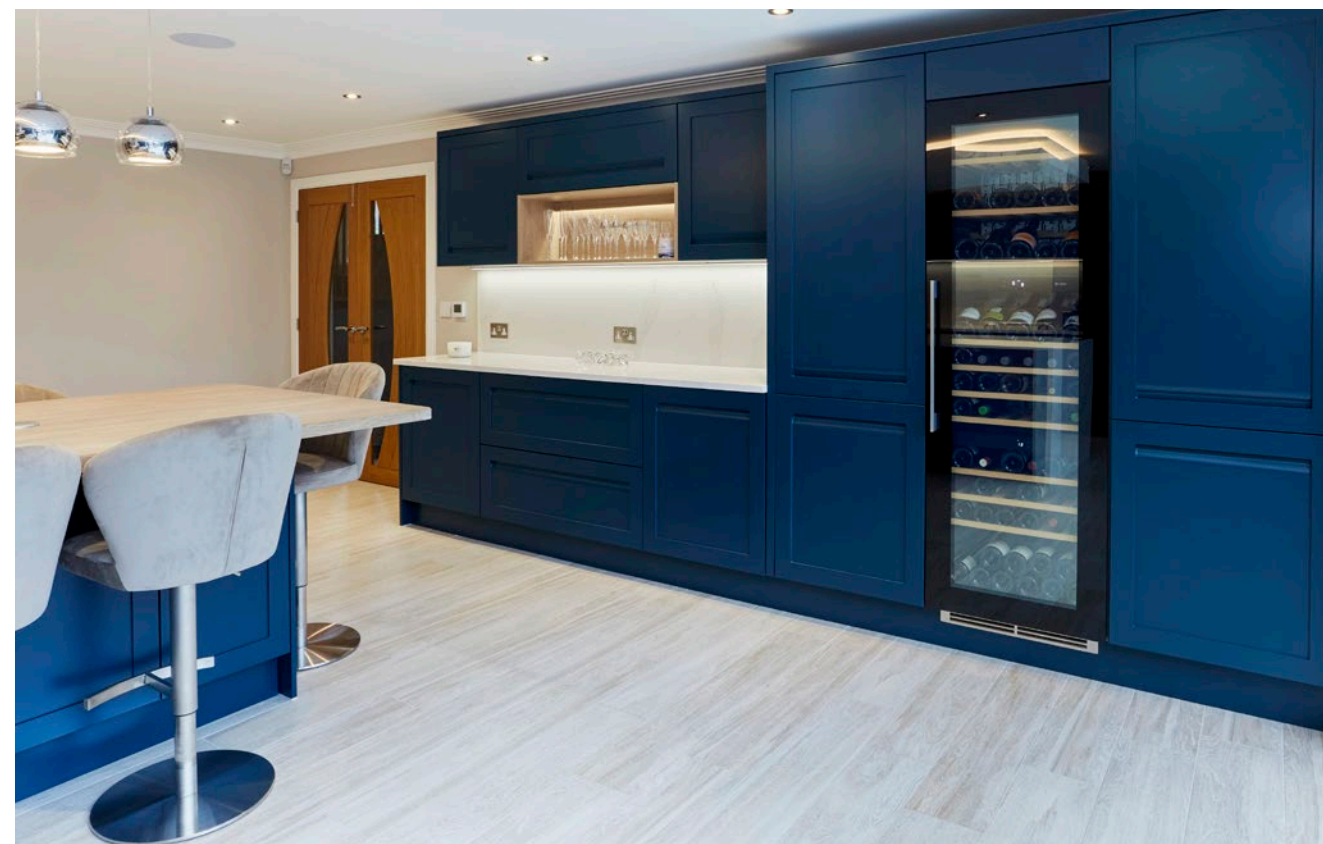






Savoy Painted  
Oxford Blue









Shaker Painted  
Anthracite









Shaker Painted  
Graphite







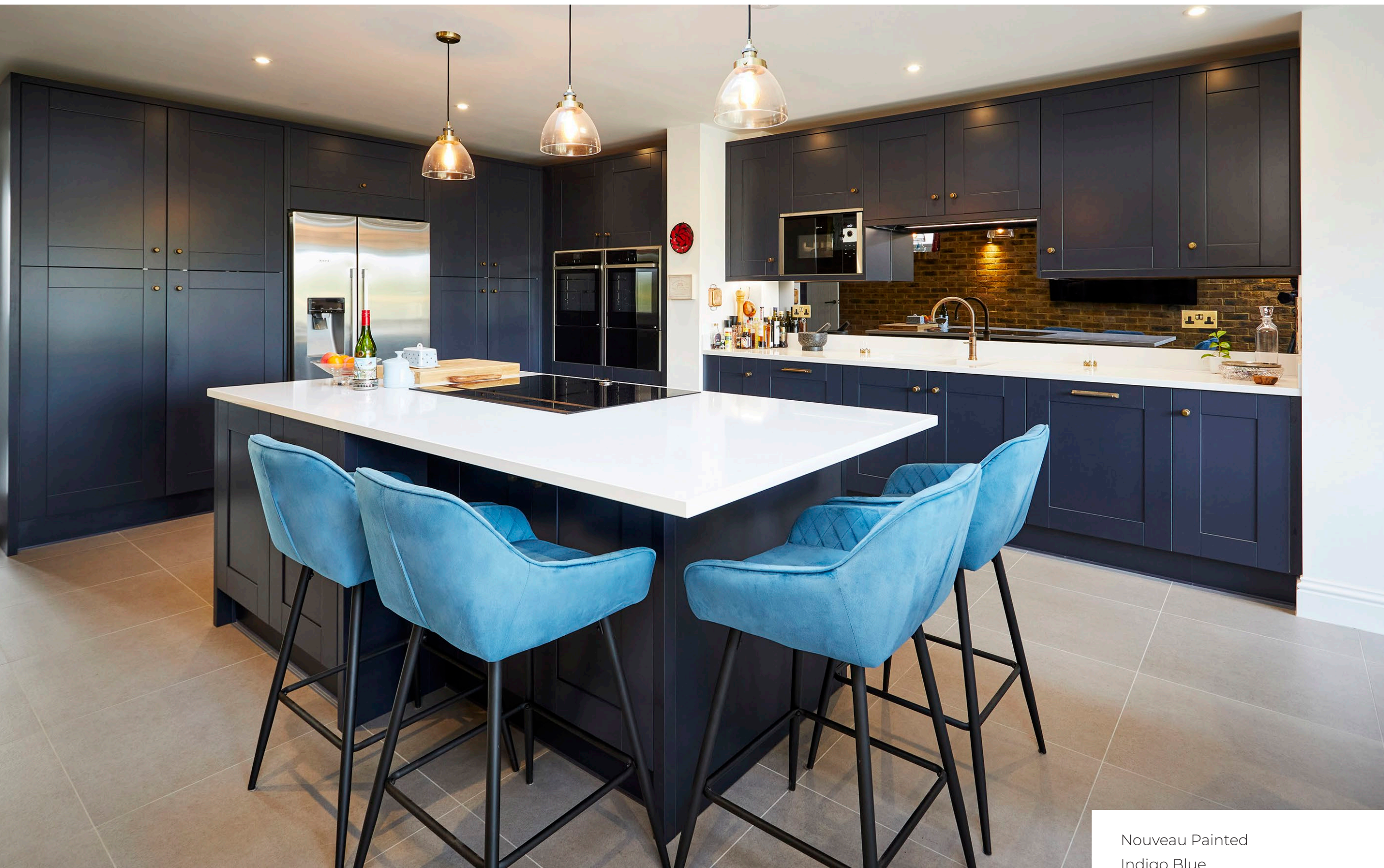


Shaker Painted Limestone  
& British Racing Green









Nouveau Painted  
Indigo Blue









Minster Painted Arctic  
& Anthracite









Edwardian Painted  
Indigo Blue & Limestone









In-Frame Painted  
Indigo Blue









Edwardian Painted  
Limestone & Indigo Blue









Harmony Painted  
Anthracite









Manor House Painted  
Limestone & Anthracite









Harmony Painted  
Limestone









Edwardian Painted  
Hickory







Handleless kitchens feature sleek, minimalist design with smooth surfaces and clean lines, bringing a contemporary feel to your home. With no handles to hinder your path, you can navigate your kitchen with ease, embracing seamless and effortless living. Alongside handleless styles, explore other modern options, including streamlined cabinetry and a variety of finishes and textures. These kitchens are thoughtfully designed to balance style and functionality, offering practical, inviting spaces that enhance everyday life and reflect your personal taste.



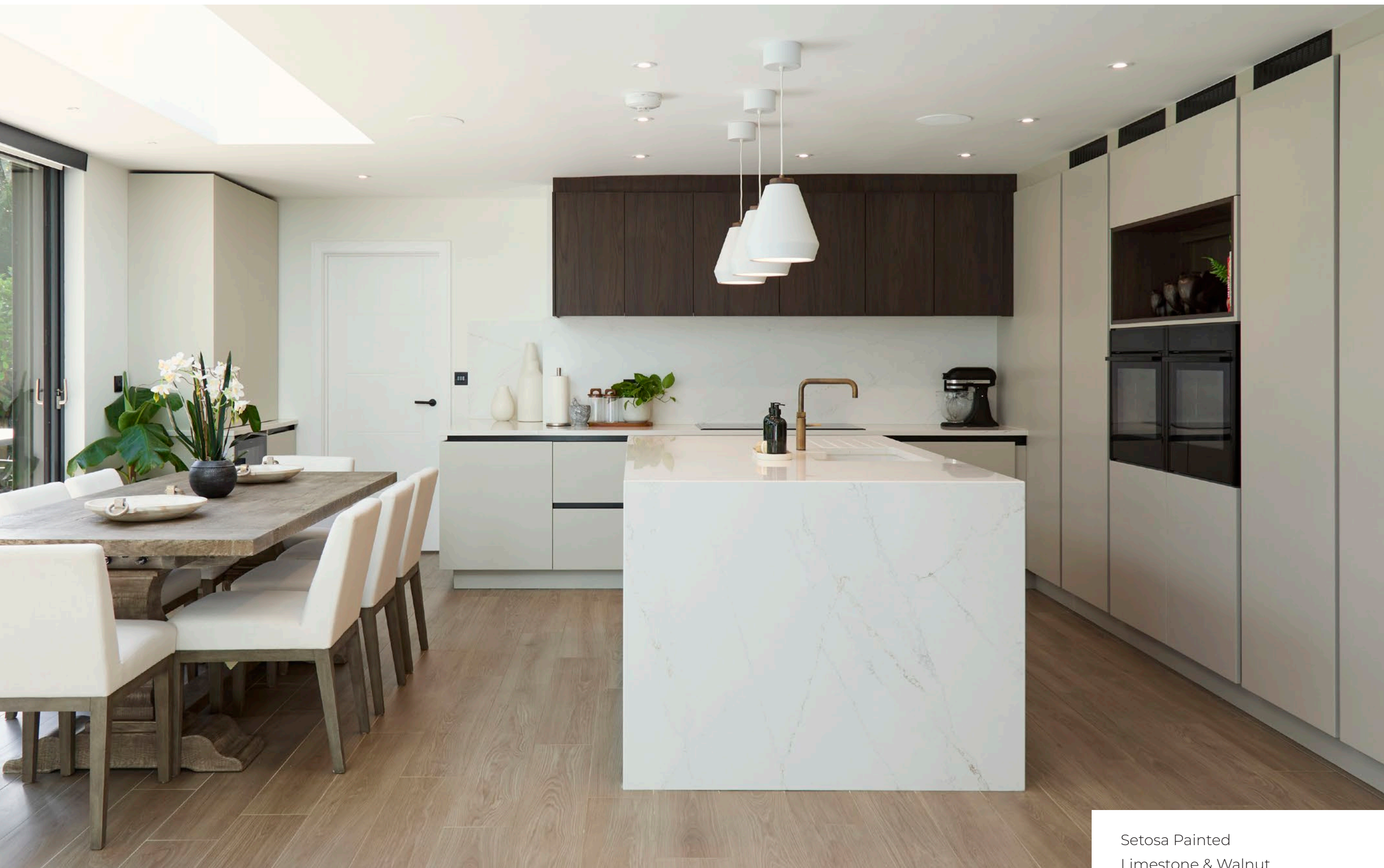
Request an appointment



# Kitchens Handleless & Modern

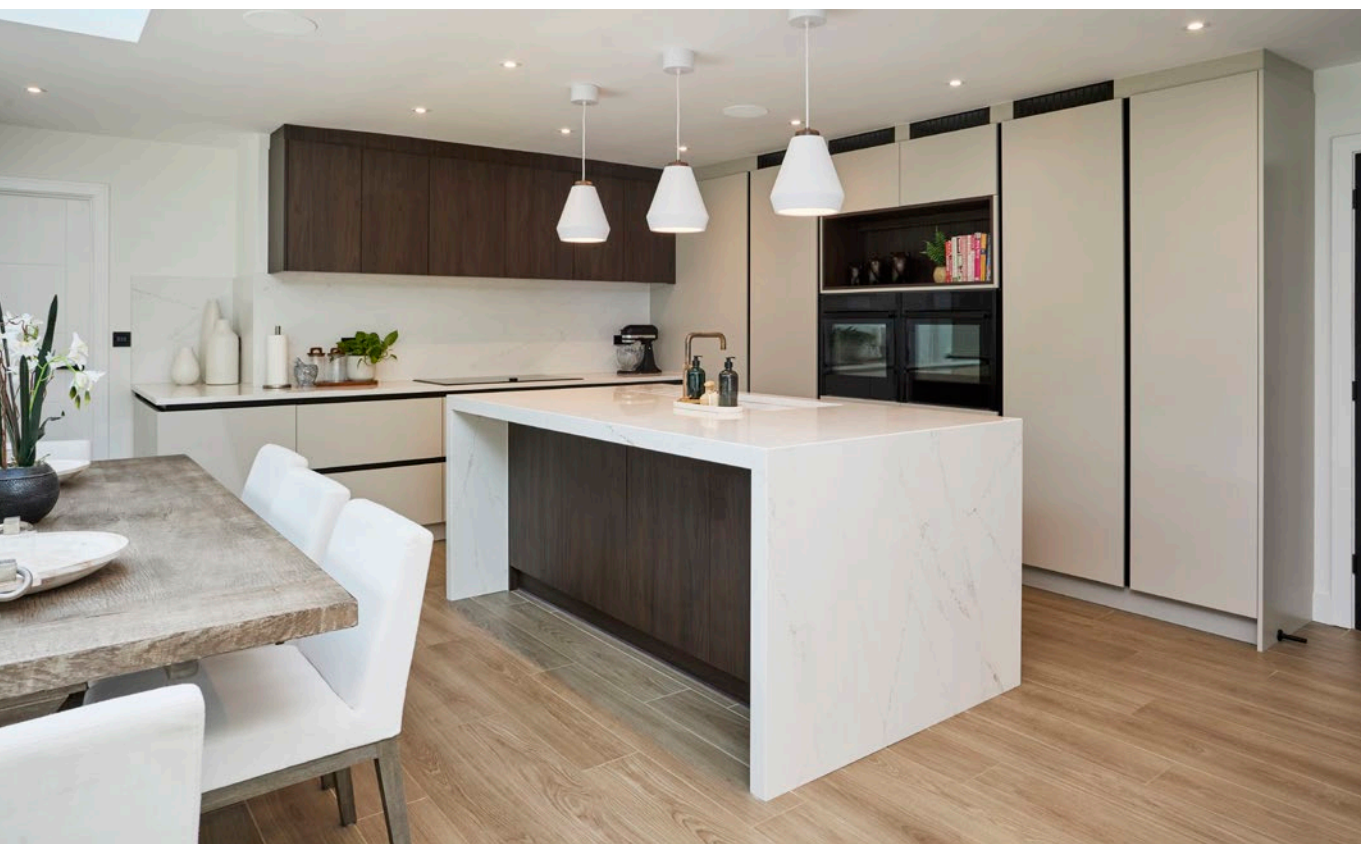






Setosa Painted  
Limestone & Walnut



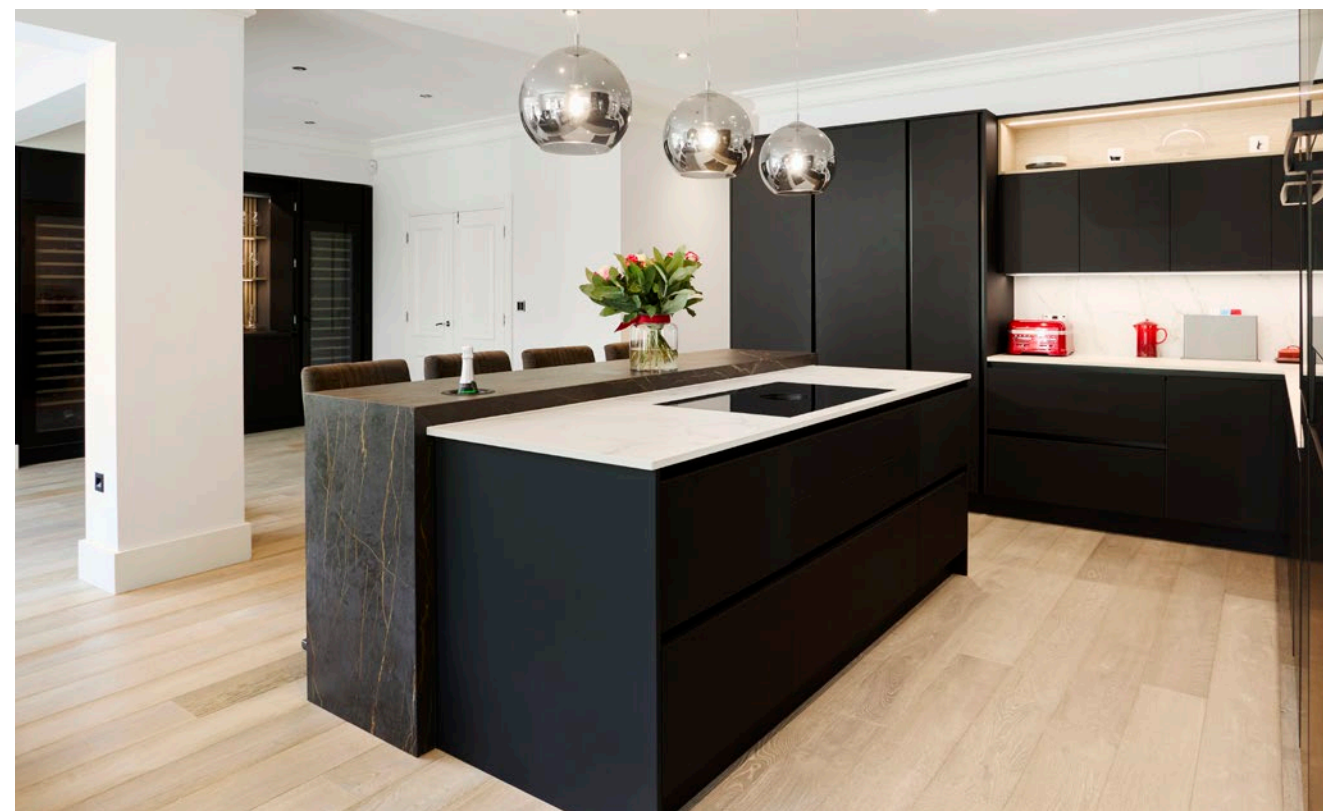






Super Matt Jet









Monarch Indigo  
Blue & Painted Slate









Setosa Pebble  
& Artstone Dark









Oblique Gloss Limestone  
& Gladstone Oak



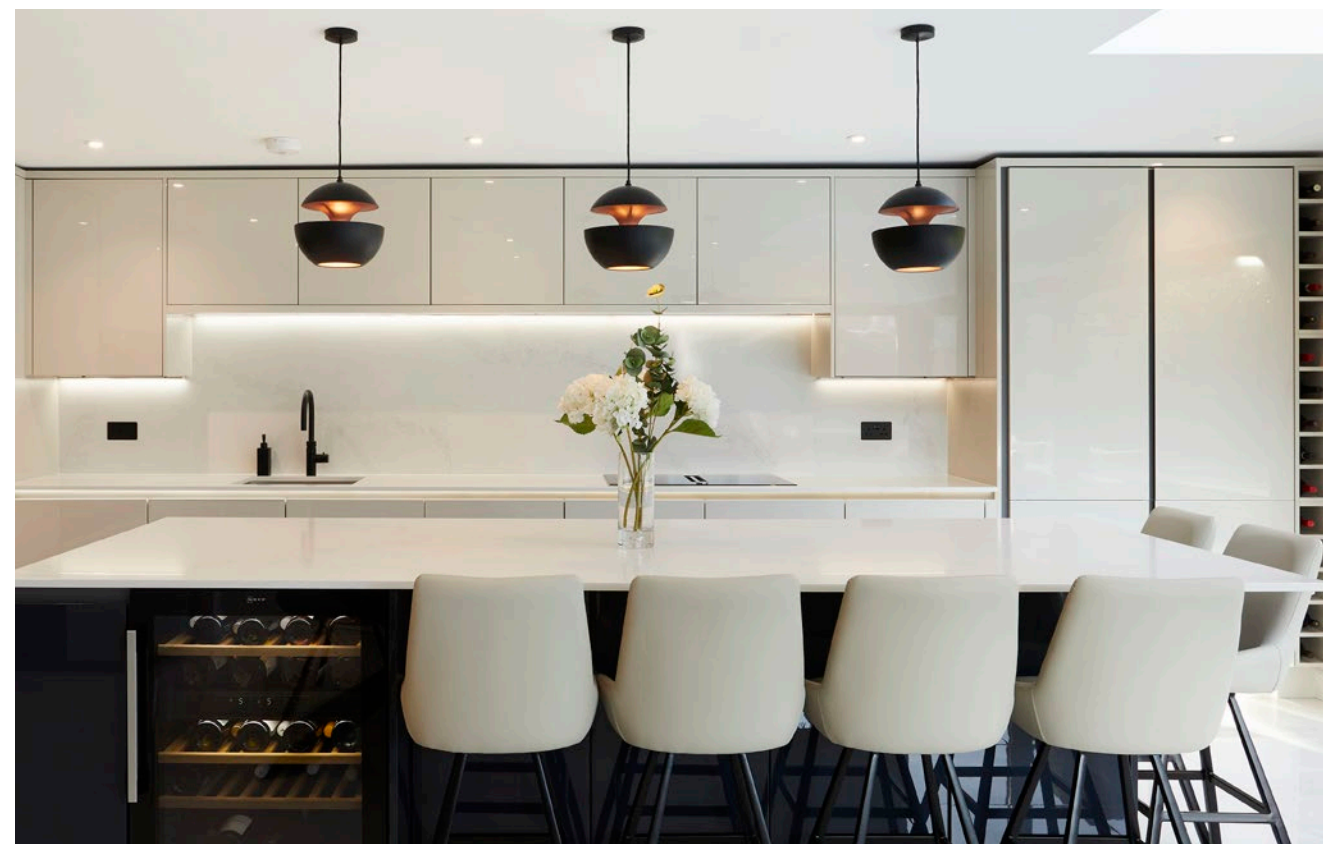






Oblique Gloss Limestone  
& Indigo Blue









Oblique Painted White  
& New England Oak



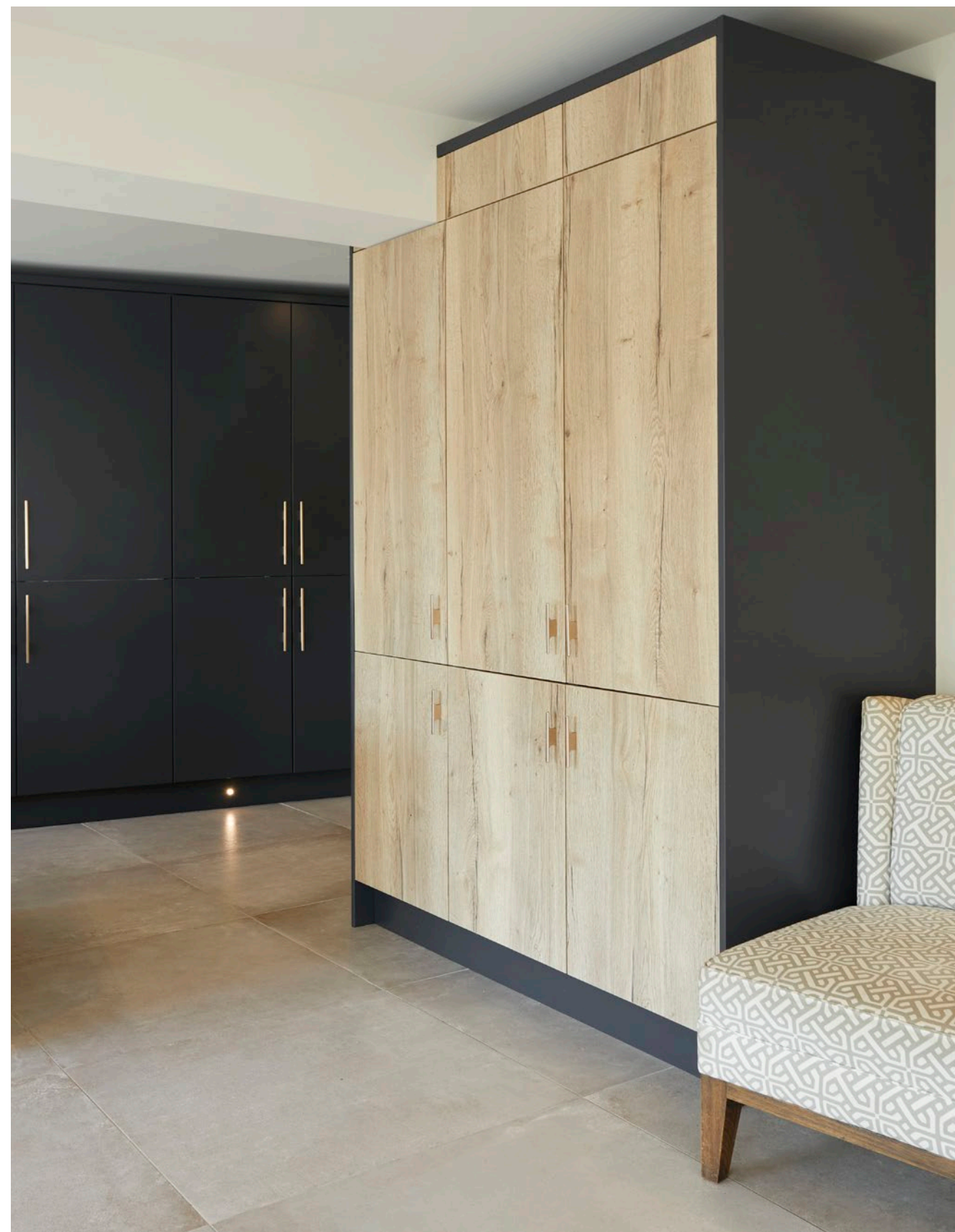
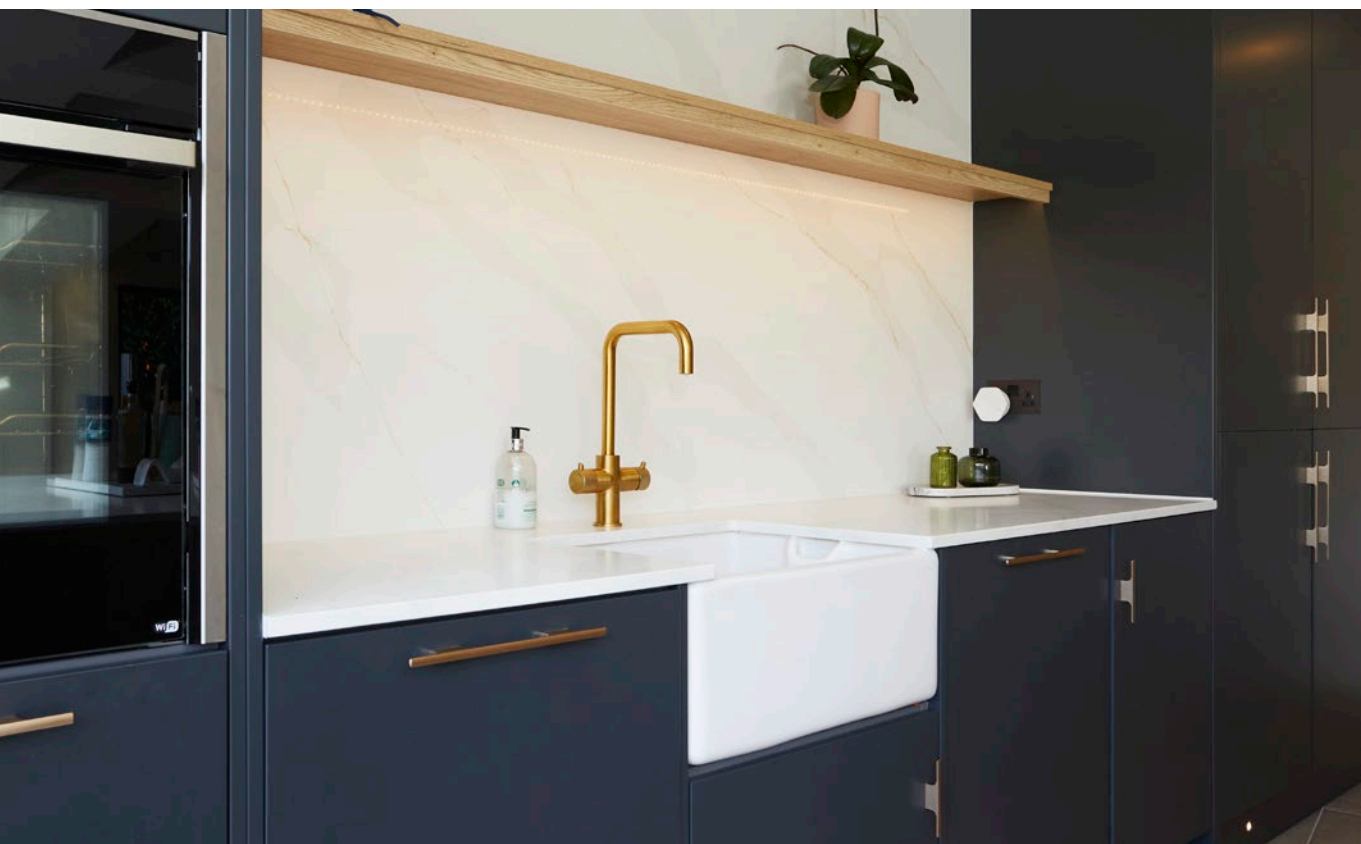






Setosa Painted Anthracite  
& New England Oak



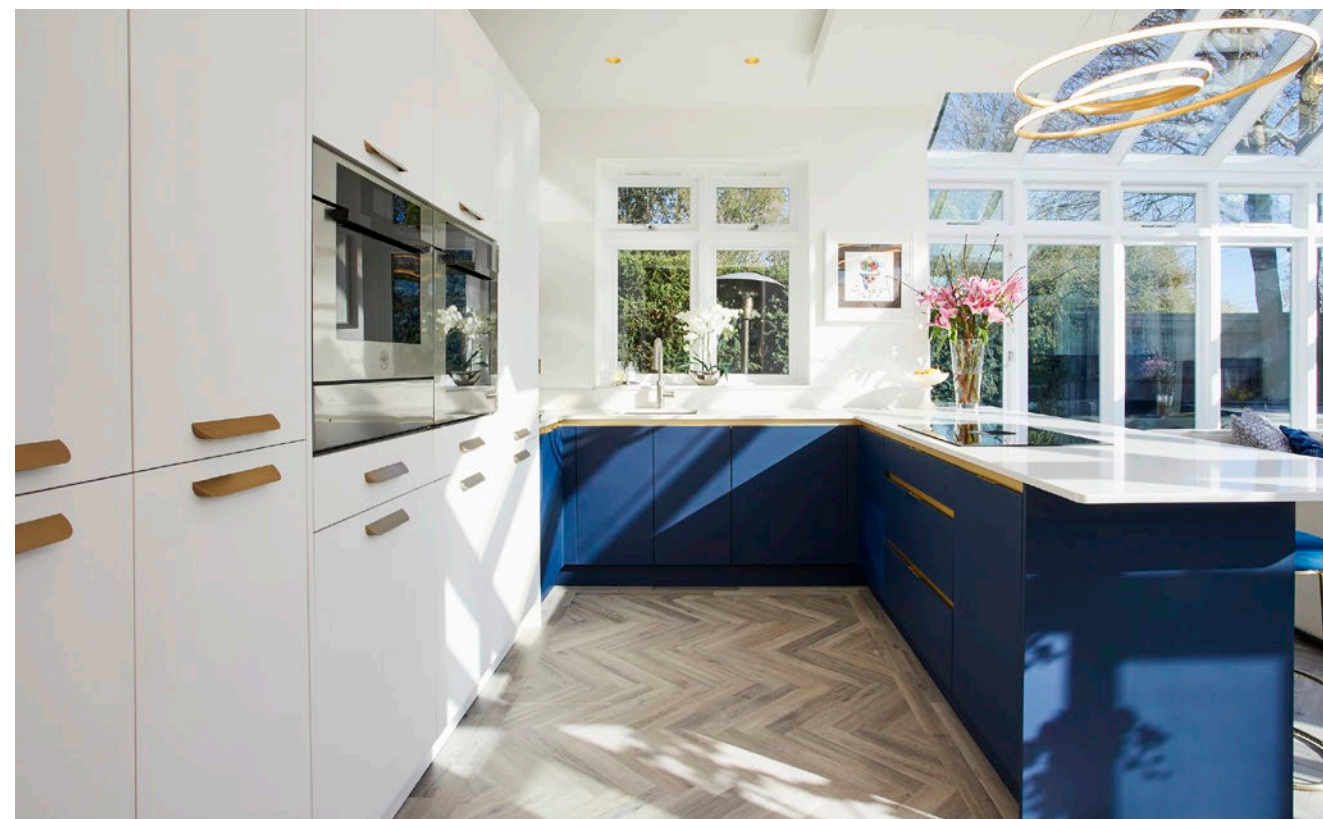






Super Matt Marine  
& Quartz



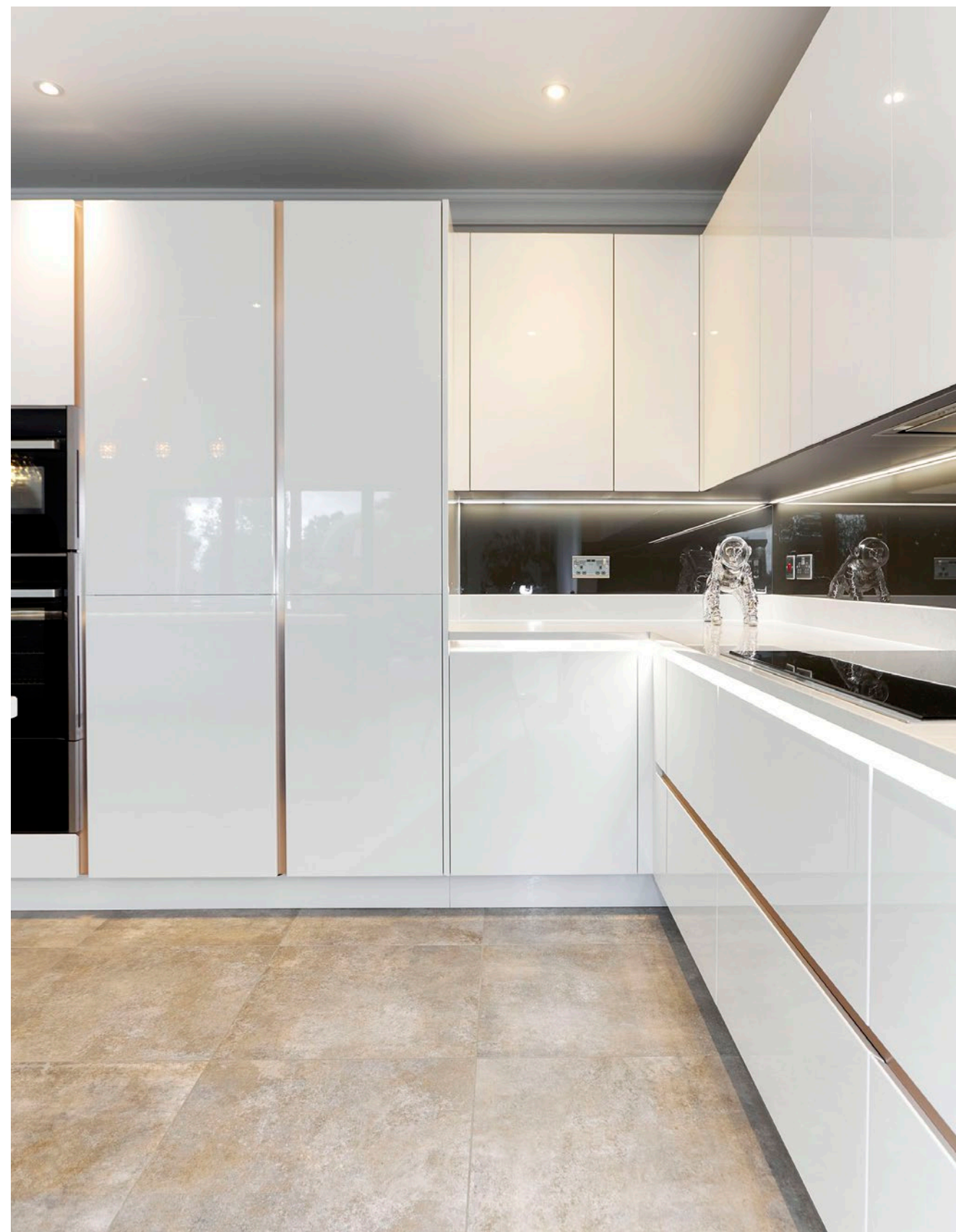






Oblique White Gloss  
& Painted Graphite







Discover a range of clever features, from breakfast pantries to chef's pantries, larders, or a stylish bar area. Embrace the simplicity of open shelving, and seamlessly transition from the kitchen to a functional boot room. Create cherished moments in a dedicated dining area. Let these features inspire your dream kitchen – a space designed for both elegance and everyday ease.



SCAN ME FOR MORE



# Kitchens Features







Full Height Wine Cooler



Kaelo Integrated  
Wine Cooler

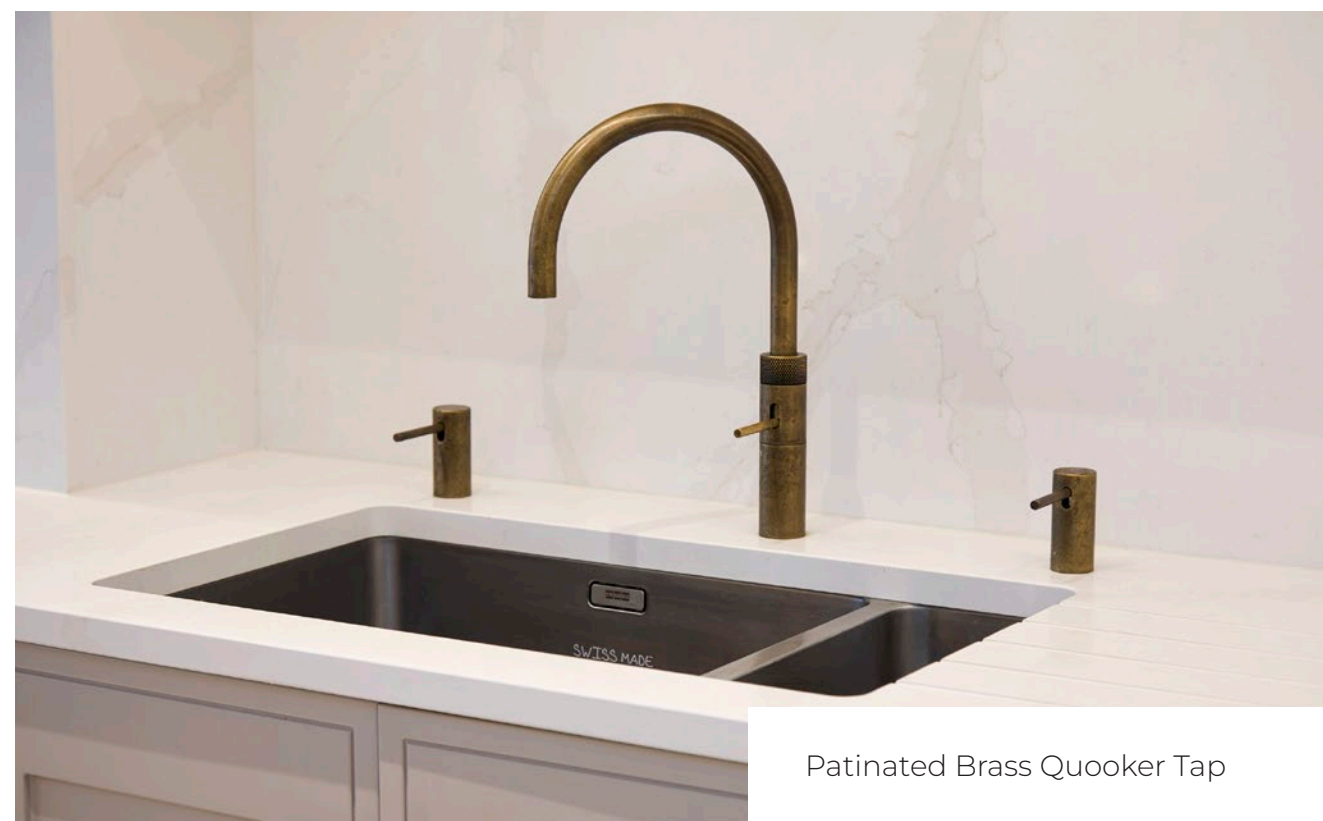




Console Cabinet

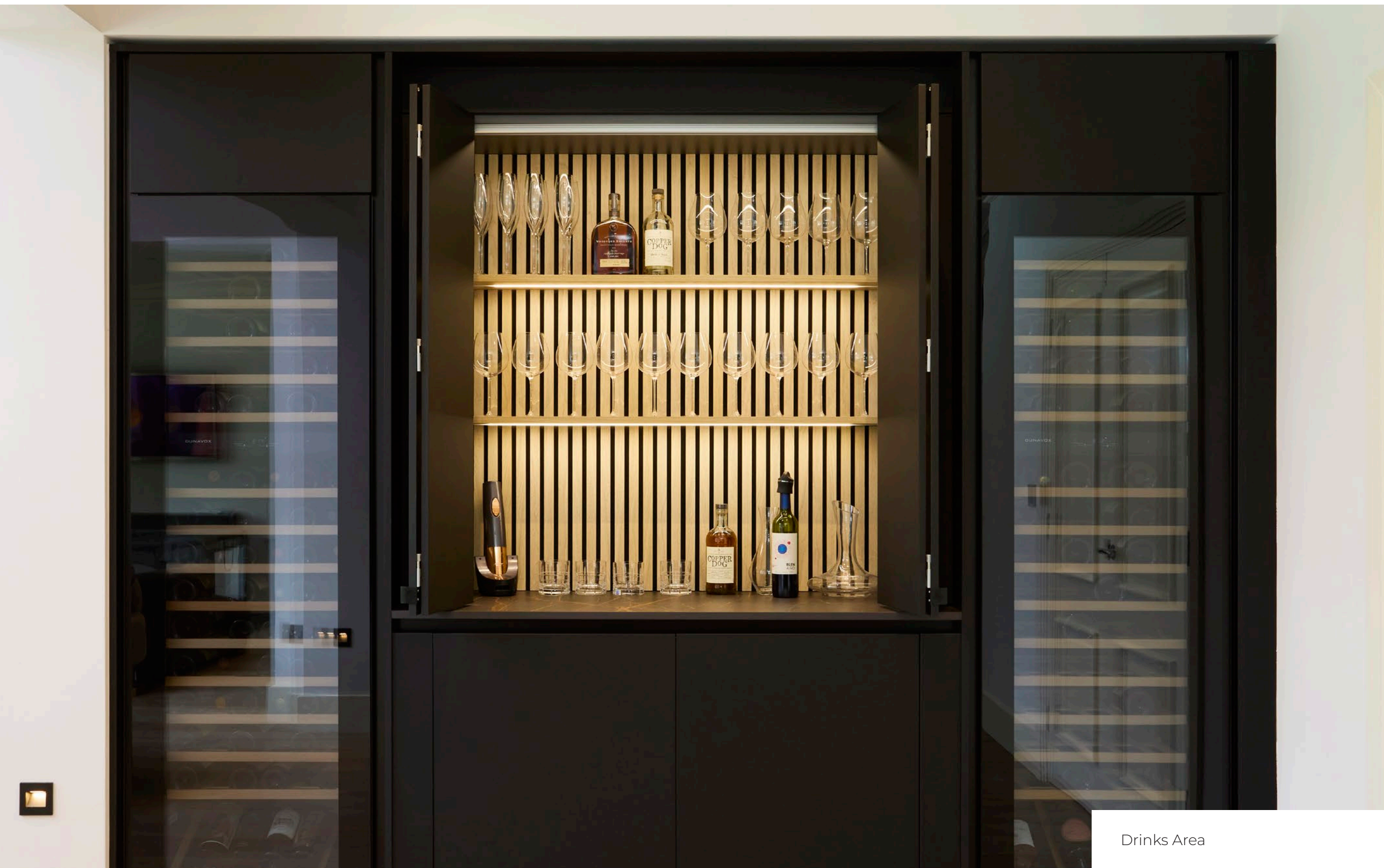


Built in window seat



Patinated Brass Quooker Tap





Drinks Area





Pull out larder



Bifold Pantry





S-Box Pop-up Socket



Tandem Larder





LeMans Corner Pantry



Boot Room





Dining Area





Chefs Pantry



Bar Area





Bifold Pantry



Walk in Pantry

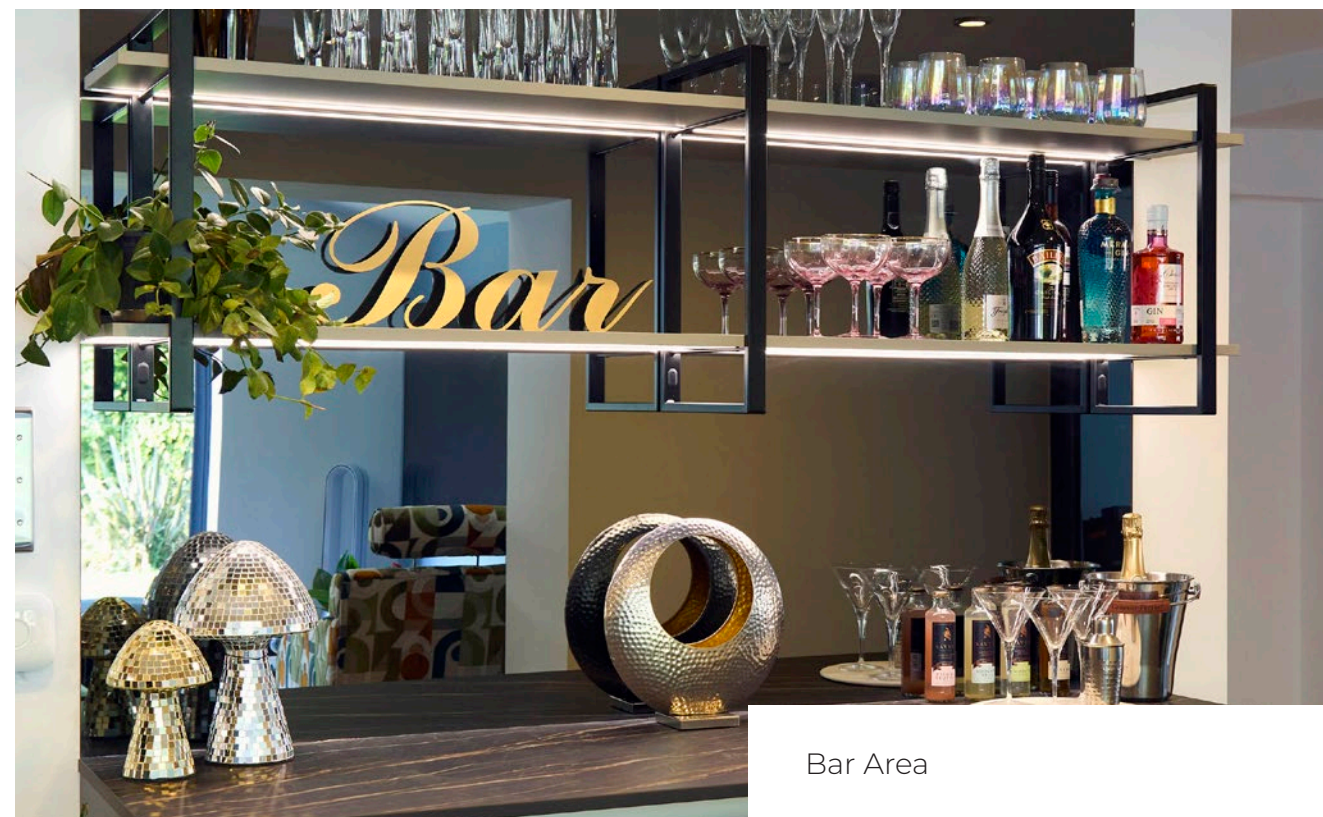




Breakfast Pantry



Neff Glass Draft

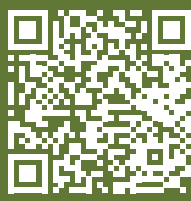


Bar Area



# Bespoke Interiors for Every Room

Our expertise extends far beyond kitchens. Want to upgrade other parts of your home? We design and install stunning fitted wardrobes, walk-in wardrobes, and dressing rooms tailored to your style and needs. Transform your home with bespoke interiors, including functional home offices, stylish media centres, elegant bar areas, and practical boot rooms. Visit our showroom or speak to our team to discover how we can help create beautifully designed spaces throughout your home.



SCAN ME FOR MORE

