

Winner
kbbreview
Kitchen Retailer
of the Year
2025

Ashford
Kitchens & Interiors

Inspiring Design | Exceptional Results



Bespoke Kitchens, Bedrooms, and Home Living Designs

We specialise in the design, supply, project coordination and installation of quality fitted kitchens, bedrooms and Home Living spaces. We showcase our extensive range of bespoke designs and beautifully crafted products and materials in our two large and inspiring showrooms in Ashford, Middlesex & Farnham Common, Buckinghamshire.

Serving customers across Berkshire, Buckinghamshire, Surrey and the surrounding areas since 1984, our family-run business is dedicated to ensuring our customers are satisfied with every step of the process; from our very first meeting, to the day your installation is complete and beyond.

Our friendly team of designers, project coordinators, installers, and specialist tradespeople are on hand to provide top class, professional service, providing exceptional results to turn your house into your dream home.

We pride ourselves on supporting you every step of the way, helping to make your experience with us exciting, enjoyable and straightforward. After many years in the industry, we remain a truly local, friendly business. We want to welcome you to our showrooms in Ashford, Middlesex, and Farnham Common, Buckinghamshire, to take a look at our inspirational displays. Choose Ashford Kitchens & Interiors to bring your new kitchen, bedroom, or home living space to life!

Ready to start your interior project with us? Book your complimentary design consultation with us today or request a call back.



CLICK OR SCAN HERE

Book a free design consultation



Contents

• Our Ethos	Page 3
• Our Projects	Page 4
• Award Winners	Page 5
• Our Showrooms	Page 7
• Meet The Team	Page 8
• The Painted Collection	Page 15
<hr/>	
• Kitchens – Shaker & In Frame	Page 16
• Kitchens – Handleless & Modern	Page 58
<hr/>	
• Kitchens – Features	Page 84



Our Ethos

We believe good interior design can truly improve your everyday life. That's why we offer a complete design, supply, and installation service - supporting you every step of the way, from the first idea through to the finished project. Our goal is to make the whole process friendly, efficient, and hassle-free.

We're passionate about creating living spaces tailored to your individual needs, where you can enjoy time with family and friends for years to come. Whether you prefer modern or classic styles, every kitchen we design balances style and practicality, making the most of your space with a personal touch.

We make all our kitchens to order here in England, crafted with care and skill using top-quality materials and components. We take pride in delivering workmanship that lasts.

While we've grown over the years, we're still a local, family-run business at heart. Our dedicated team of designers, project coordinators, installers, and specialist tradespeople go above and beyond to ensure you're happy from quotation to completion.

As Stephen Flower, our Owner and Managing Director, puts it:
"We strive to provide a seamless and efficient service, making communications straightforward from day one, so that you will be delighted with the results. Exceptional service and traditional customer care is at the heart of every project we undertake, and this principle has underpinned our successful family business since 1984."



Our Projects

With every project we complete, we love seeing how redesigning living spaces have improved our customers' lifestyles. Our vast range of collections can transform day-to-day life.

We continue to strive and perfect our service; it is our aim to make client relationships and communication convenient, friendly, and professional. For this reason, feedback and testimonials are of the highest value to us. We have completed several thousand installations in and around the local area over the last four decades and a large amount of our work is thanks to word of mouth and recommendations. We are very proud of the beautiful kitchens we have completed.

We are excited to showcase these in our very own Ashford Kitchens Brochure. Enjoy!

Kitchens | Bedrooms | Home Living



Winners of the KBB Review Award

- Kitchen Retailer of the Year 2025

We were absolutely thrilled to be announced as Kitchen Retailer of the Year 2025. On Thursday 24th April at the iconic Blackpool Tower Ballroom, we were crowned the best in the industry, across the UK and Ireland. At the prestigious KBB Awards. With over 1,000 industry professionals in attendance, it was a proud moment to hear our name announced.

What this award means

It's not just about one thing - this honour recognises excellence across every part of kitchen retailing:

- Exceptional customer service
- Beautiful design and showroom presentation
- Trusted business performance

A few words from Stephen

"We should not underestimate what an incredible achievement this is – to be recognised with such a prestigious award by industry professionals, while competing against well-established and reputable kitchen retailers across the UK and Ireland."

It's a well-deserved honour that reflects the high standards to which we hold ourselves. For our customers, it's reassurance that you've chosen a team that's trusted, proven, and recognised as the best in the industry."

- Stephen Flower, Owner & Managing Director

kbbreview
Kitchen Retailer of the year



NEFF Master Partner Awards 2025

Proud Winners of MasterPartner of the Year

When you're planning your dream kitchen, you want to know you're working with the best. That's why we're proud to share that we were named MasterPartner of the Year at the NEFF Master Partner Awards 2025—the highest honour given to NEFF's top retailers across the UK.

Held on Friday 4th July at the stunning Fairmont Windsor Park Hotel, this event celebrates retailers who deliver outstanding kitchen design, expert product knowledge, and exceptional customer service—with NEFF appliances at the heart of it all.

What It Means for You

- **Award-Winning Expertise**

Trusted guidance from the UK's top NEFF retailer.

- **Inspiring Design**

Kitchens tailored to your lifestyle, with style and function in perfect balance.

- **Showroom Experience**

Explore the latest NEFF innovations in a space designed to inspire.

- **Exceptional Service**

From first visit to final installation, we're with you every step of the way.



Our Showrooms

A visit to our showrooms is the best way to explore what's possible for your home.

Each of our showrooms - in Ashford, Surrey and Farnham Common, Buckinghamshire - offers over 250 square metres of space, with more than 20 full displays to explore. From kitchens and bedrooms to fitted cabinetry for media centres, bar areas, and more, our displays are designed to help you picture what's possible in your own home. You can open cupboards and drawers, explore storage options, and get a true feel for the quality and detail in our work - something that's hard to replicate in a brochure or online.

You'll also find a full wall of samples, making it easy to see how different finishes, colours, and textures come together in a finished space. Our friendly and knowledgeable team is always ready to welcome you, answer your questions, and share ideas - whether you're just starting to gather inspiration or are further along in your project.

You're welcome to visit anytime, or book an appointment for more dedicated time with one of our designers.

Explore Our Showrooms Virtually

Can't visit just yet? Take a virtual walk through our showrooms from the comfort of your home. Scan the QR codes below to explore each location in 360°:



CLICK OR SCAN HERE

Ashford, Surrey Showroom



CLICK OR SCAN HERE

Farnham Common,
Buckinghamshire Showroom



Meet Our Award-Winning Team

Say hello to our team of experienced, friendly professionals dedicated to delivering exceptional service from start to finish. We pride ourselves on offering knowledgeable, impartial, and constructive advice. Always with a genuine, customer-first approach.

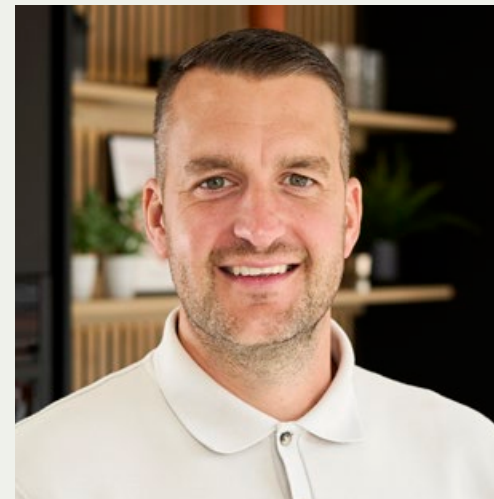
What makes us truly special is our continued investment in both systems and people who genuinely care about every project in progress. We're committed to building lasting relationships and delivering results you'll love.

Our award-winning team is built on seamless communication, attention to detail, and a dedication to exceeding expectations. From your first visit to the final installation, we're here to make the process smooth, enjoyable, and stress-free.

You'll be in great hands with our specialist installation teams and project co-ordinators, who work together to ensure a flawless experience every step of the way.

Visit our welcoming showrooms in Ashford, Surrey or Farnham Common, Buckinghamshire, to meet the team, explore our displays, and begin your journey.

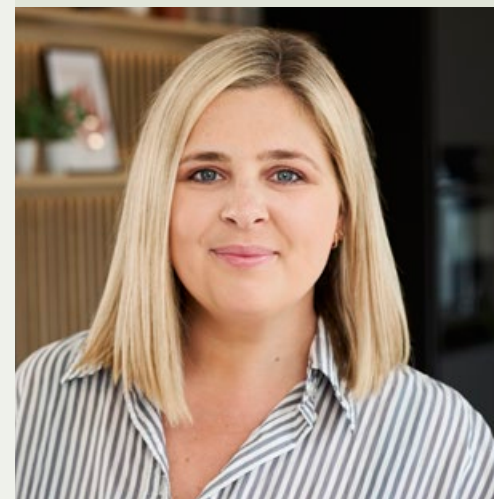
Owners



Stephen Flower

Managing Director

Stephen has a passion for Interior Design and believes that a well-planned living space can truly transform the way we live. With many years of experience in the industry, he has grown up surrounded by it. Beyond design, Steve thrives on the day-to-day running of the business. He takes pride in cultivating a positive, supportive company culture where innovation, collaboration, and traditional customer service are at the forefront. Building a team that shares his vision and watching the business grow is one of the most rewarding parts of his role. When he's not working on design concepts or leading the team, you'll find Steve playing football with his three sons, jogging through Burnham Beeches, or chasing a new personal best on his Peloton Bike.



Grace Flower

Managing Director

Grace brings a passion for interior design and home improvement to everything she does and plays a central role in shaping the style, presentation, and direction of the business. Grace thrives on the creative process and finds real joy in making sure the showrooms are immaculate, welcoming, and always on brand- reflecting the high standards and aesthetic the business is known for. Grace is also closely involved in the operational side of the company, overseeing HR and Marketing. She's deeply committed to building a positive team culture and continually evolving the brand to stay fresh, engaging, and aligned with their values. Outside of work, Grace enjoys spending time with her family, keeping up with her three young boys, and keeping an eye on the latest interior décor and fashion trends.

Leadership Team



Amy Hartland
Admin and Showroom Manager

Amy plays a key role in ensuring our showrooms are always spotless, beautifully presented, and inspiring. Her high standards for detail and presentation set the tone for the entire team. Behind the scenes, Amy keeps our internal admin systems running smoothly, helping us maintain an exceptional customer experience. She also leads our impressive social media presence, bringing her creative flair to life and offering our customers the opportunity to explore all our amazing, completed projects. Outside of work, Amy enjoys spending her weekends exploring the outdoors with her beloved beagle, Lola.



Daniel Brunt
Business Operations Manager

Dan plays an important role in the day-to-day running of the company. Benefitting from many years of experience in the industry his role is varied and hands-on, covering strategy, project delivery, and a strong focus on customer service and overall operational efficiency. He's always looking for ways to improve how the business operates and ensuring every aspect runs at its best for the benefit of our customers and the team alike. Outside of work, Dan enjoys spending quality time with his family and perfecting his golf game out on the course.



Guy Fox
Project and Installation Manager

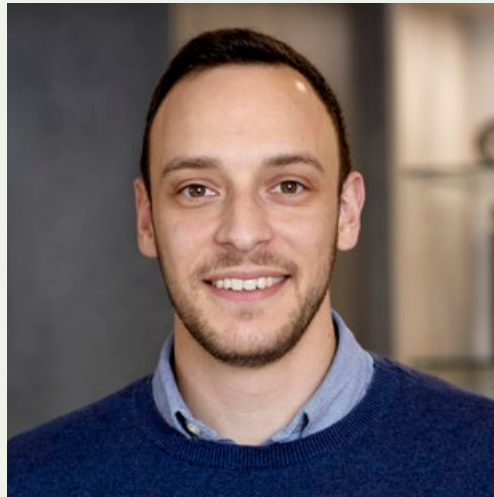
Guy has years of experience in the industry and is known for his significant depth of knowledge, technical expertise, and problem-solving skills. Guy ensures that every project runs smoothly and that customers are delighted with the result. His ability to tackle challenges head-on and deliver exceptional solutions makes him an invaluable part of the team. Guy is the brother-in-law of Stephen and Grace, helping to continue the family tradition. In the office, Guy is also the resident practical joker, always ready with a dad joke to lighten the mood! Outside of work, Guy enjoys playing football with his three boys and loves unwinding on a relaxing cycle ride.



Phil Shelley
Sales and Design Manager

Phil leads our Sales & Design team with years of experience, deep product knowledge, and a passion for interiors — helping clients create their dream spaces, even in the most challenging layouts. Outside of work, Phil isn't just passionate about kitchens professionally, he's also a keen cook and loves experimenting with new vegan recipes for friends and family.

Design Consultants



Sam Harris

Senior Design Consultant

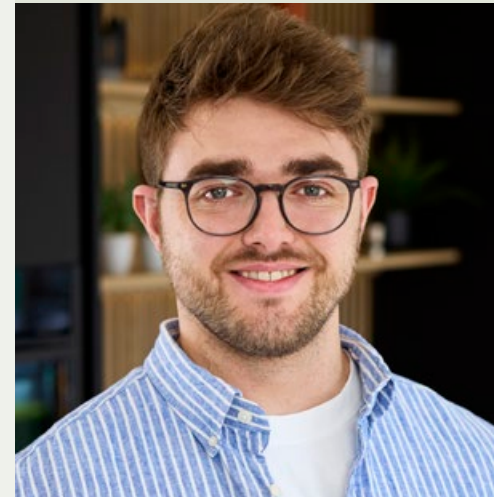
Sam is passionate about designing dream kitchens, bedrooms, and home living spaces that reflect each client's unique lifestyle. His creativity and meticulous attention to detail ensure every design is both beautiful and practical — a space clients will love living in for years to come. Outside of work, Sam enjoys scenic walks with his lively cockapoo, Cooper, who's known to make the occasional cheerful appearance in the showroom.



Yaqub Khalid

Design Consultant

With a background in fashion, Yaqub brings a fresh and distinctive perspective to interior design. He has a keen eye for emerging trends and believes that well-considered interiors have the power to transform a house into a home — blending style with everyday function. Outside of work, Yaqub enjoys staying active, exploring new foods, and has a passion for wildlife, often seeking out nature-based activities while traveling.



Scott Hedger

Senior Design Consultant

With a degree in Interior Design and a natural talent for balancing creativity with practicality, Scott brings each client's vision to life with thoughtful precision and heartfelt care. Known for his calm and caring approach, he ensures every space not only looks beautiful but functions seamlessly. When he's not transforming interiors, Scott channels his energy into CrossFit, where he competes in events that test strength, agility, and discipline, qualities he also brings to his design work.



Fran Selci

Design Consultant

Fran is passionate and enthusiastic about her work, finding joy in the variety each project brings. With a degree in Design, she combines her creativity with a deep commitment to helping clients bring their dream interiors to life. Fran's unique perspective ensures that every design is thoughtfully tailored to suit her clients' needs. Outside of the showroom, she enjoys shopping and cherishing quality time with her family.

Operations Team



Dipesh Solanki
Senior Project Co-ordinator

Dipesh is known for his hands-on approach and commitment to excellence. He regularly visits sites to monitor progress and address any challenges that arise. He is meticulous in his planning and implementation. In his spare time, Dipesh swaps Post-it notes for a cricket bat and enjoys the challenge and teamwork of the sport. He's also a big Formula 1 fan!



Shannon McTague
Senior Project Co-ordinator

Shannon has a background in kitchen design. She's passionate about making sure every project runs smoothly and loves seeing the results come together. Shannon's attention to detail and perfection is admired in the business. Before kitchens, Shannon was International Cabin Crew, travelling all over the world to places like Singapore, Shanghai, Sydney, and Philadelphia! In her spare time, she enjoys watching true crime documentaries and hitting the gym.



Steve Bower
Project Co-ordinator

Steve has been in the industry for over 20 years, bringing years of experience in design and project delivery. With a methodical approach and keen attention to detail, he makes sure every project runs smoothly from start to finish. Outside of work, he's a big football fan and loves to travel, always looking forward to his next trip.



Ryan Belchamber
Project Co-ordinator

Ryan began his career as a kitchen designer before moving into his role as Project Co-ordinator. His design background gives him a creative eye and a strong attention to detail in each project he manages. He enjoys visiting sites and working closely with installers to make sure each project comes together perfectly. When he's not working, you'll find him running, watching football, or planning his next trip away.

Customer Experience & Marketing Team



Zoe Taylor
Admin and Showroom Advisor

Zoe’s friendly approach, eye for detail, and creative flair shine through in every part of her work. Whether she’s chatting with customers in the showroom or supporting the team behind the scenes, she brings energy and care to everything she does. Zoe loves helping customers find ideas that bring their projects to life. And outside of work, she enjoys arts and crafts, and spending time with friends and family.



Grace Ingram
Admin and Showroom Advisor

Gracie is one of the first friendly faces customers meet when they visit the showroom. She loves getting to know people and helping them visualise their dream space, whether it’s a kitchen, bedroom, or home living project. With a warm and enthusiastic approach, Gracie enjoys being part of the early stages of each project and helping customers feel excited about the journey ahead. Outside of work, she loves crocheting (currently making decorations for her sister’s wedding!) and going on long walks with her dog, Boycie.



Steve Strange
Service Technician

Steve brings over four decades of installation expertise. As a familiar face in our customers’ homes, Steve adds a personal touch to every project, making sure it’s a positive experience. Known as our “Biscuit fiend,” Steve enjoys a quick break between jobs for a cuppa and a biscuit!



Izzy Shelley
Marketing Manager

Izzy oversees our marketing strategy and online presence. She’s been part of the team since 2014, taking on a variety of roles along the way, which gives her a great understanding of all aspects of the business. Outside of work, Izzy is learning Greek, a nod to her heritage, as her mum is from Greece, and she’s enjoying the challenge of picking up the language.

Company Hero's



Richard Flower

Retired

Richard, alongside Tracey, established the company in 1984 and played a pivotal role in developing the company's reputation for quality and service. Now retired, Richard offers his wisdom and guidance to the business in a consultancy role, continuing to share his invaluable experience. Outside of work, Richard is a keen cyclist, having taken part in numerous cycling trips across France. He enjoys spending his retirement exploring new cycling routes and spending time with family.



Winnie

Winnie is our office pooch, and she's been part of the team since she was a puppy. As a friendly and affectionate cockapoo, Winnie loves greeting customers and getting all the attention during her visits to the showroom. When she's not soaking up the love from clients, she enjoys long walks in the park and the occasional nap. Winnie's photogenic nature makes her a star during photoshoots for our social media!



Tracey Flower

Finance

Tracey, alongside Richard established the company in 1984. Over the years, she has played an important role in ensuring the financial stability of the business and continues to contribute in this capacity, working part-time. Tracey's dedication and expertise have been vital to the company's success and longevity. Tracey enjoys swimming and spending quality time with her six grandsons.



The Painted Collection by Ashford

Timeless Elegance. Infinite Possibilities.

Discover the art of kitchen design with our Painted Collection. With 26 trending painted finishes, from calming neutrals like Nude and Parchment to bold tones like Cobalt and Enchanted, each shade is carefully curated to complement both classic and contemporary interiors. Whether you're drawn to calming tones or vibrant hues, the Painted Collection brings your dream kitchen to life.

Customisable Design

Choose from 17 door styles, offering over 440 unique combinations. Every kitchen is built to order for a truly bespoke experience.

Durable Beauty

Our factory-applied finishes are smooth, consistent, and engineered to resist cracking, peeling, and fading. Ensuring long-lasting colour and easy maintenance.

FIRA Gold Certified

Tested to the highest UK standards for furniture quality and durability, giving you peace of mind that your kitchen is built to last.

Designed for Living

Whether renovating a period property or styling a modern home, the Painted Collection offers the flexibility and finesse to suit every lifestyle.



The Shaker and In-Frame kitchen embodies timeless simplicity with its distinctive square-framed design, minimal detailing, and enduring British appeal. A true classic, it creates orderly, clutter-free spaces that balance style and practicality. Adding to this charm, classic kitchen features like tongue-and-groove cabinetry, feature mantels, and dressers bring heritage-inspired character. These kitchens offer a warm, inviting atmosphere while meeting the demands of modern family life.



CLICK OR SCAN HERE

Book a free design consultation

Kitchens Shaker & In Frame





Monarch Limestone





Sovereign Indigo Blue





Edwardian Painted
Cashmere





Sterling Painted
Oxford Blue





Sand Oak
Wood Shaker



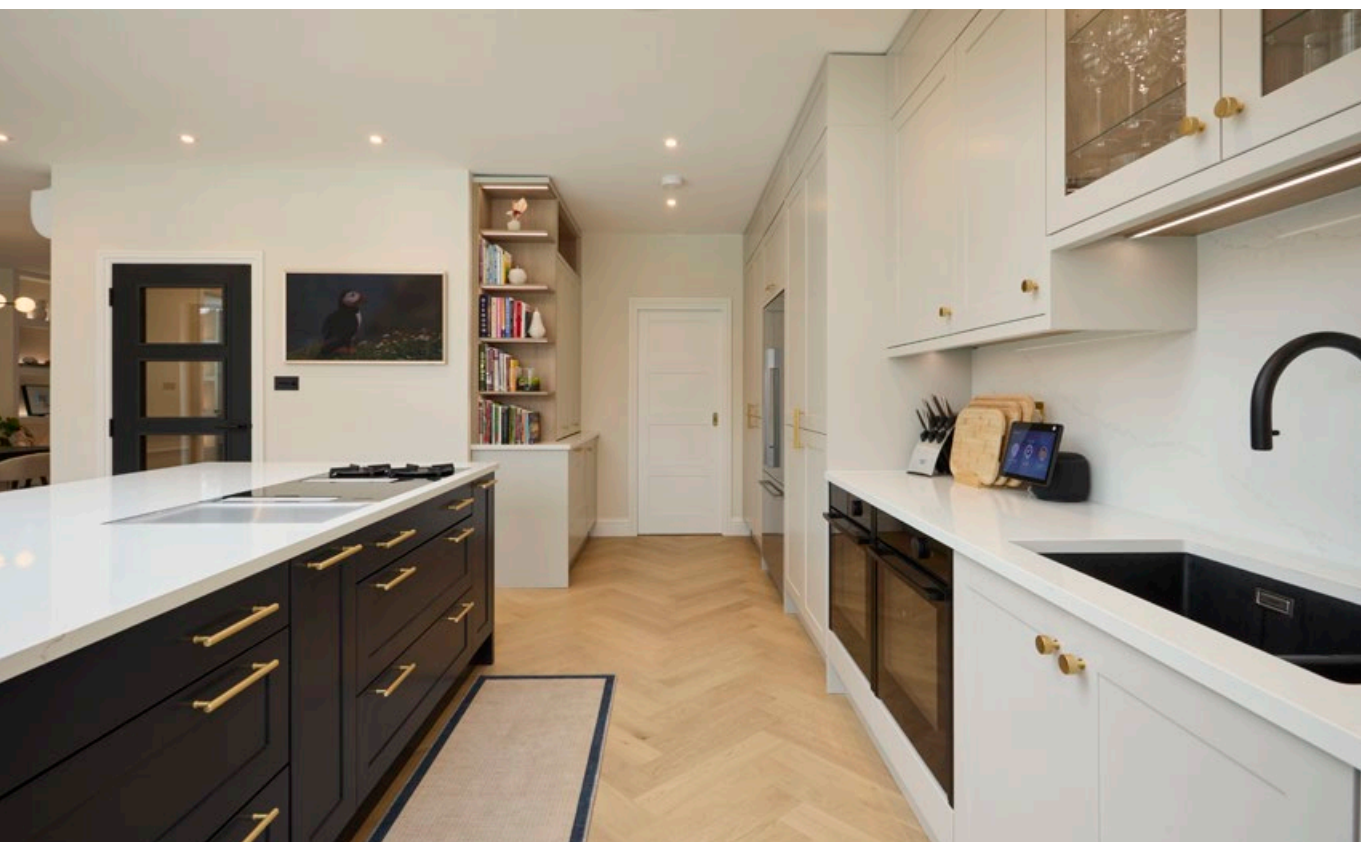


Monarch Light Grey
& Botanical Green





Signature Painted
Limestone & Indigo Blue





Shaker Painted
Anthracite





Signature Painted
Botanical Green & Pebble





Manor House
Painted Limestone





Nouveau Painted
Indigo Blue





Minster Painted Arctic
& Anthracite



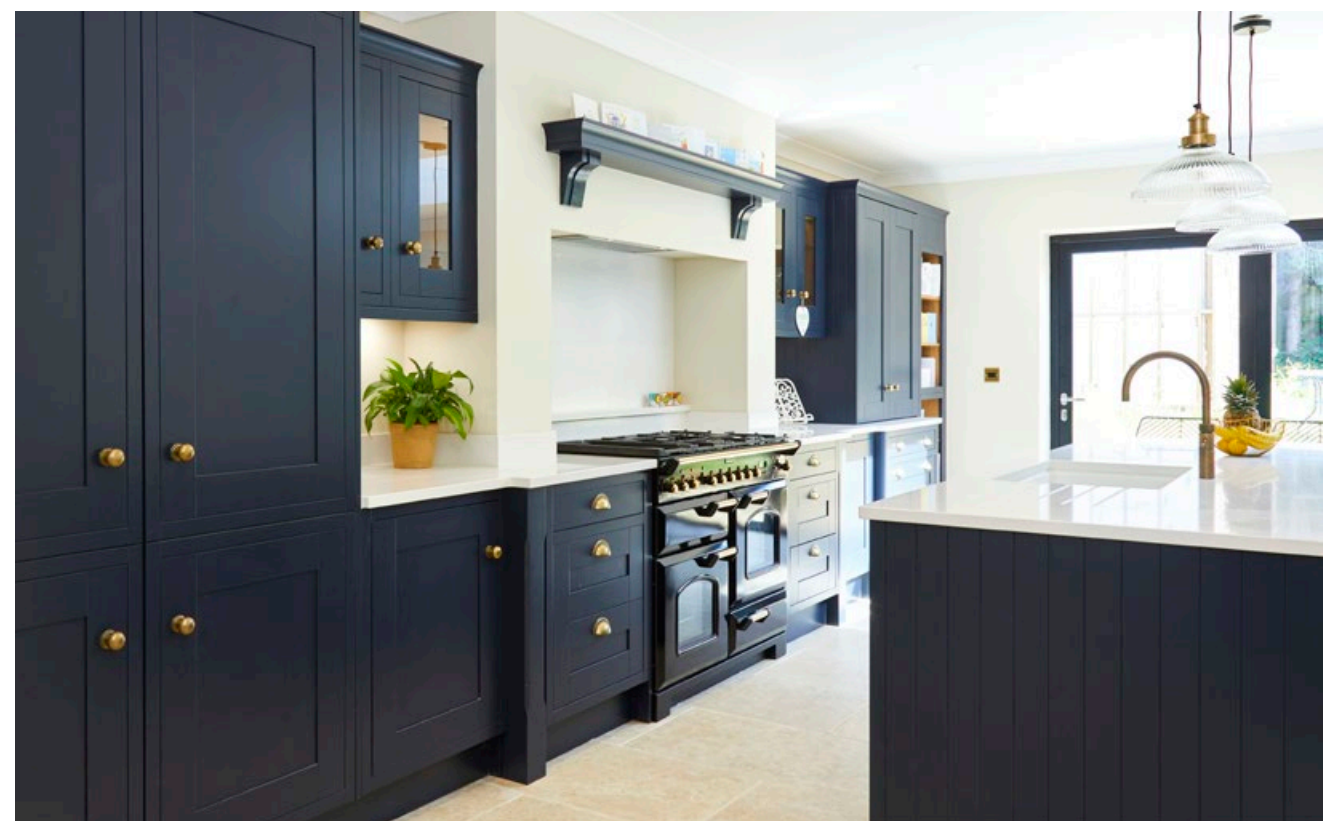


Edwardian Painted
Indigo Blue & Limestone





In-Frame Painted
Indigo Blue





Edwardian Painted
Limestone & Indigo Blue





Harmony Painted
Anthracite





Sterling Painted
Arctic & Natural Oak





Sterling Painted
Limestone & Oxford Blue





Harmony Painted
Limestone





Edwardian Painted
Hickory



Handleless kitchens feature sleek, minimalist design with smooth surfaces and clean lines, bringing a contemporary feel to your home. With no handles to hinder your path, you can navigate your kitchen with ease, embracing seamless and effortless living. Alongside handleless styles, explore other modern options, including streamlined cabinetry and a variety of finishes and textures. These kitchens are thoughtfully designed to balance style and functionality, offering practical, inviting spaces that enhance everyday life and reflect your personal taste.



CLICK OR SCAN HERE

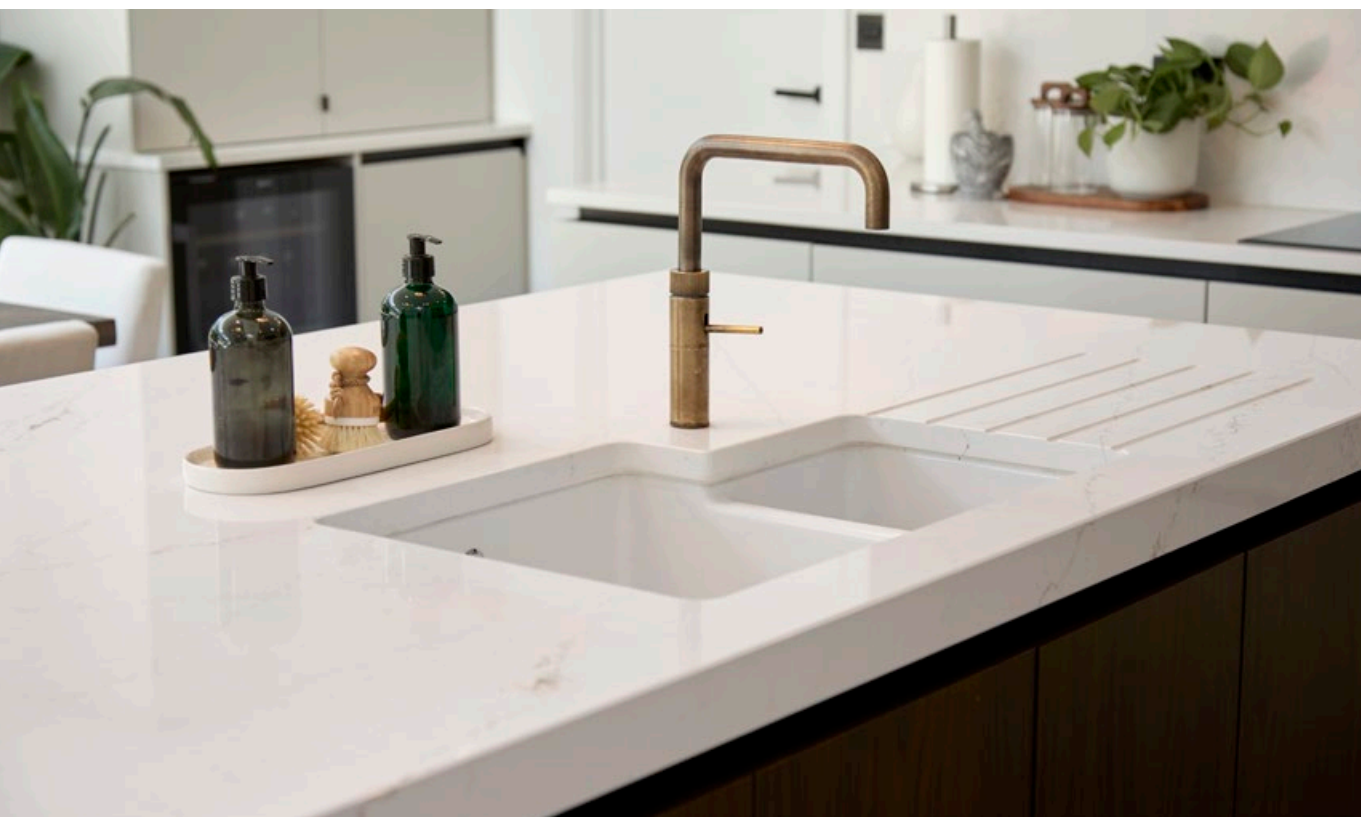
Book a free design consultation

Kitchens Handleless & Modern



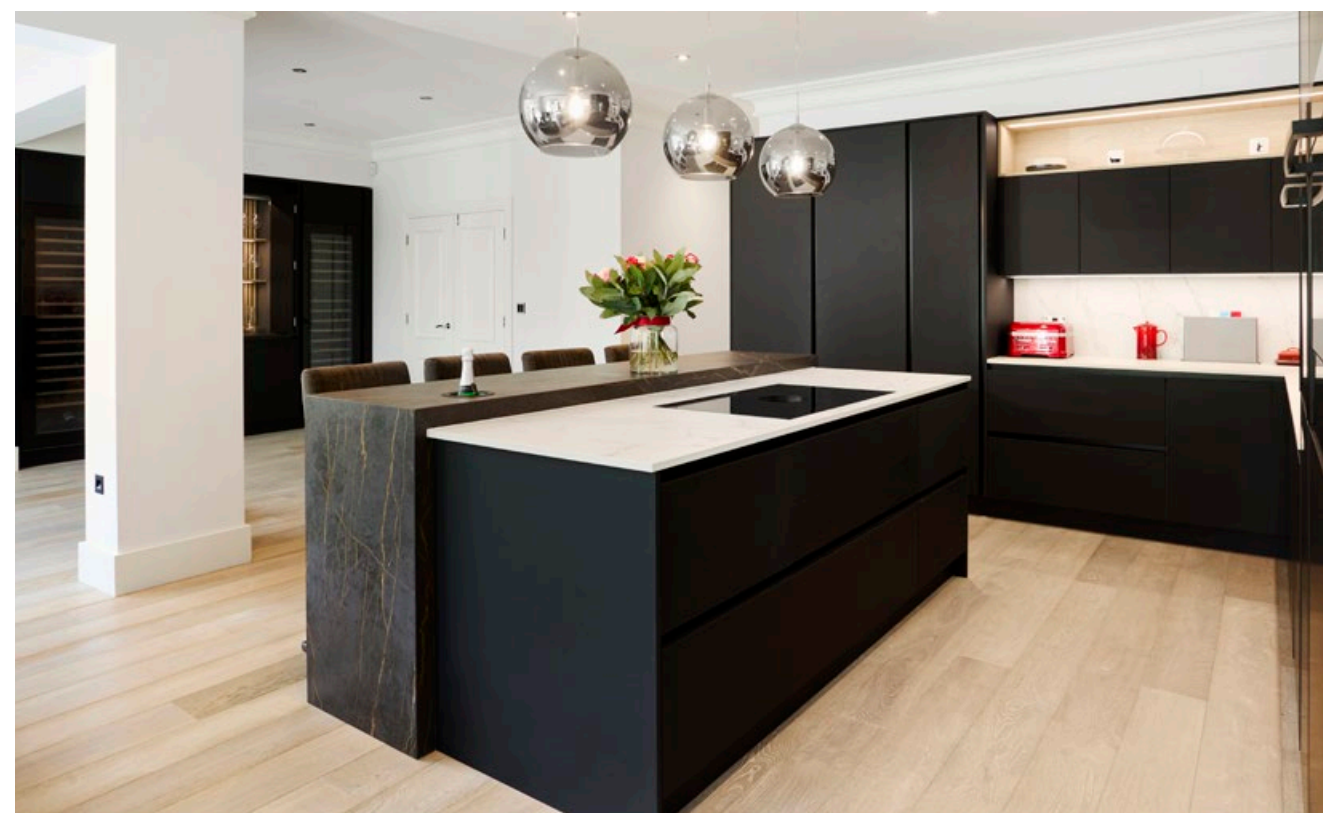


Setosa Painted
Limestone & Walnut





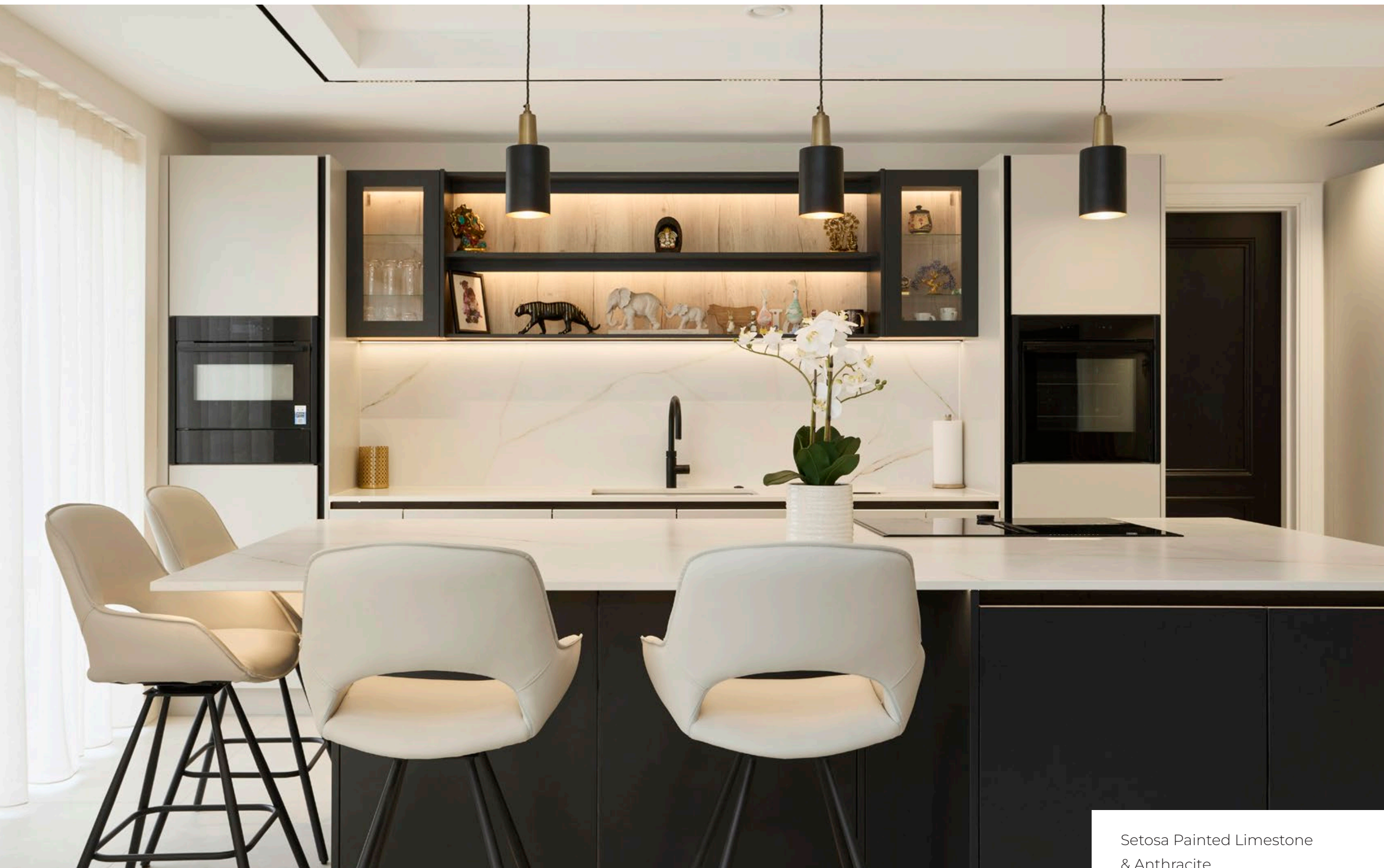
Super Matt Jet





Pure Carbon
& Medium Oak





Setosa Painted Limestone
& Anthracite





Super Matt Clay & Setosa
Painted Botanical Green





Monarch Indigo
Blue & Painted Slate



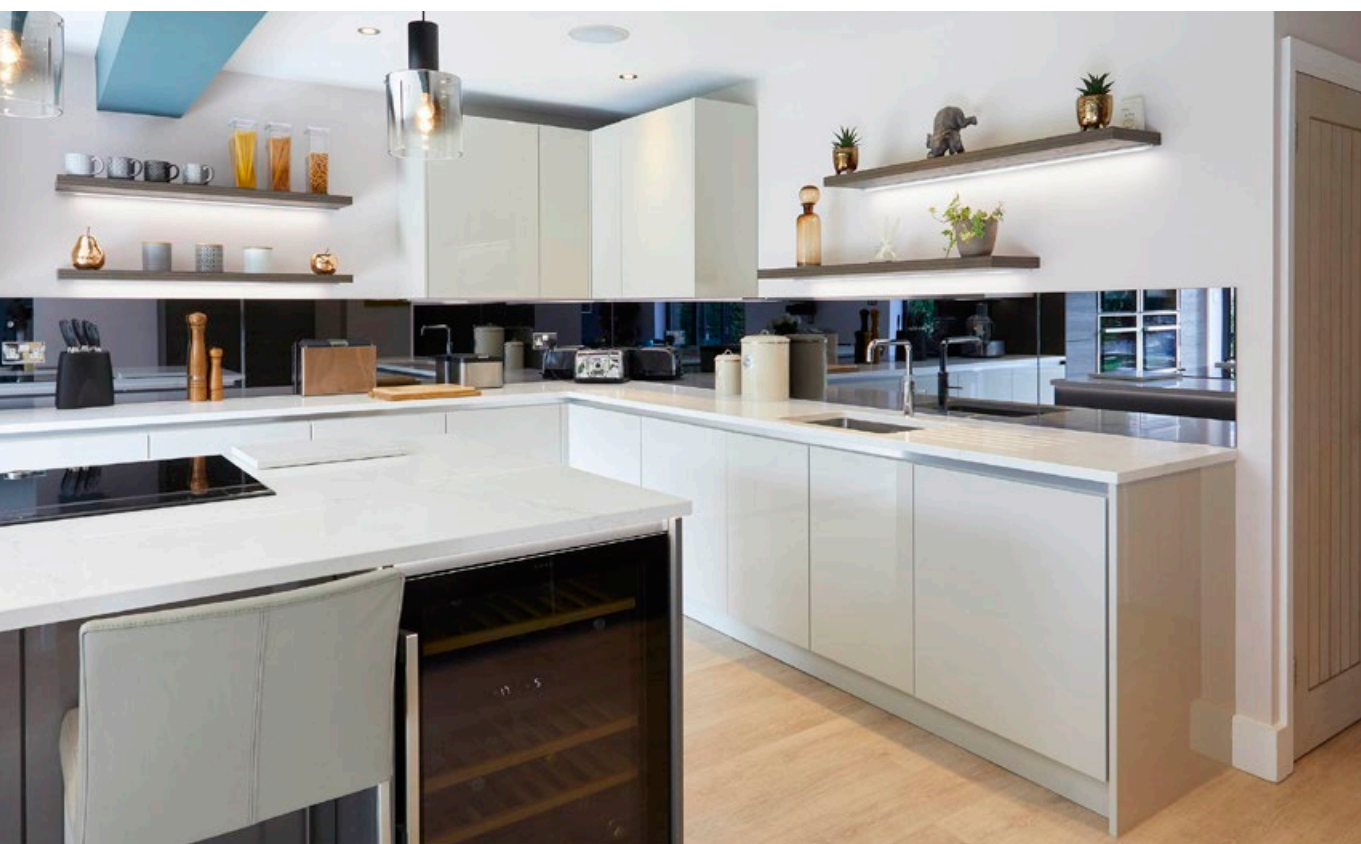


Setosa Pebble
& Artstone Dark



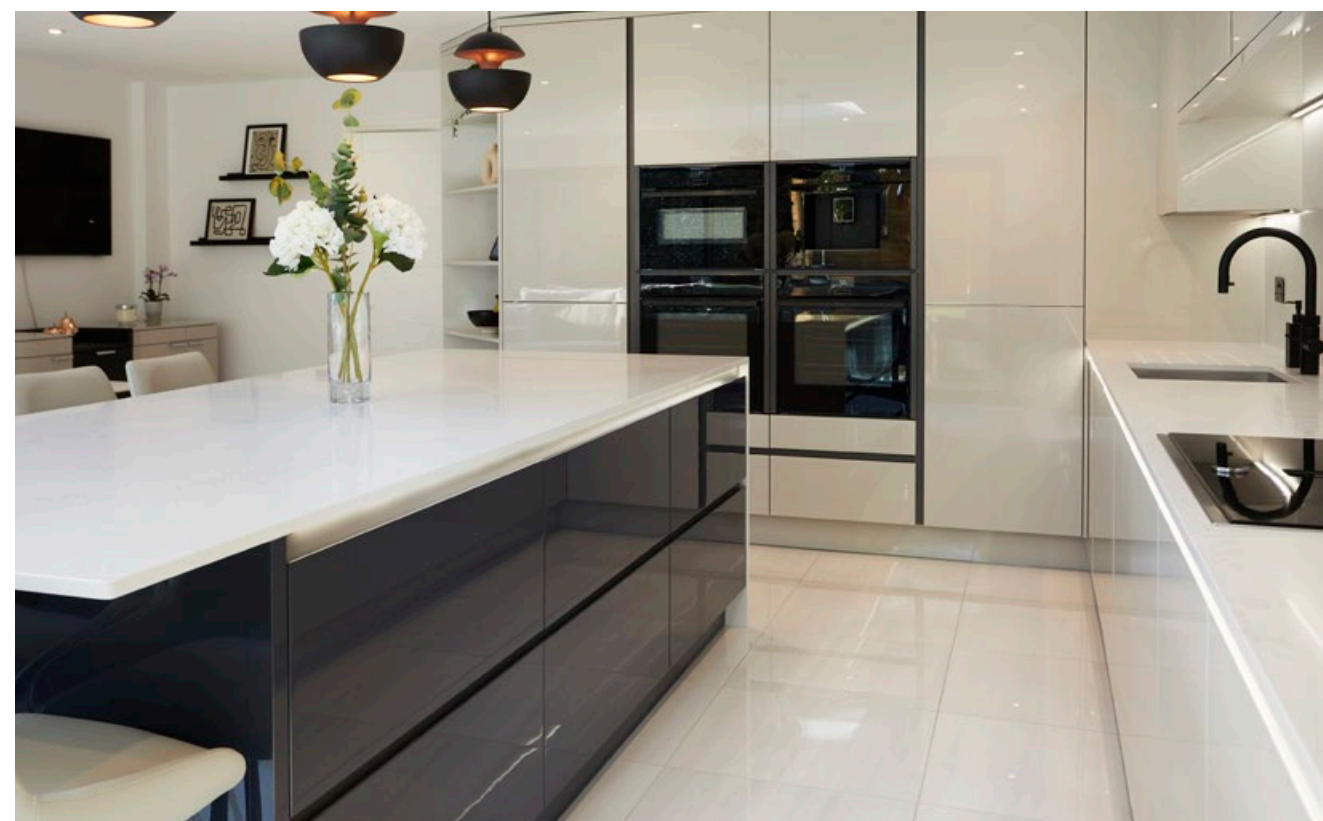


Oblique Gloss Limestone
& Gladstone Oak





Oblique Gloss Limestone
& Indigo Blue



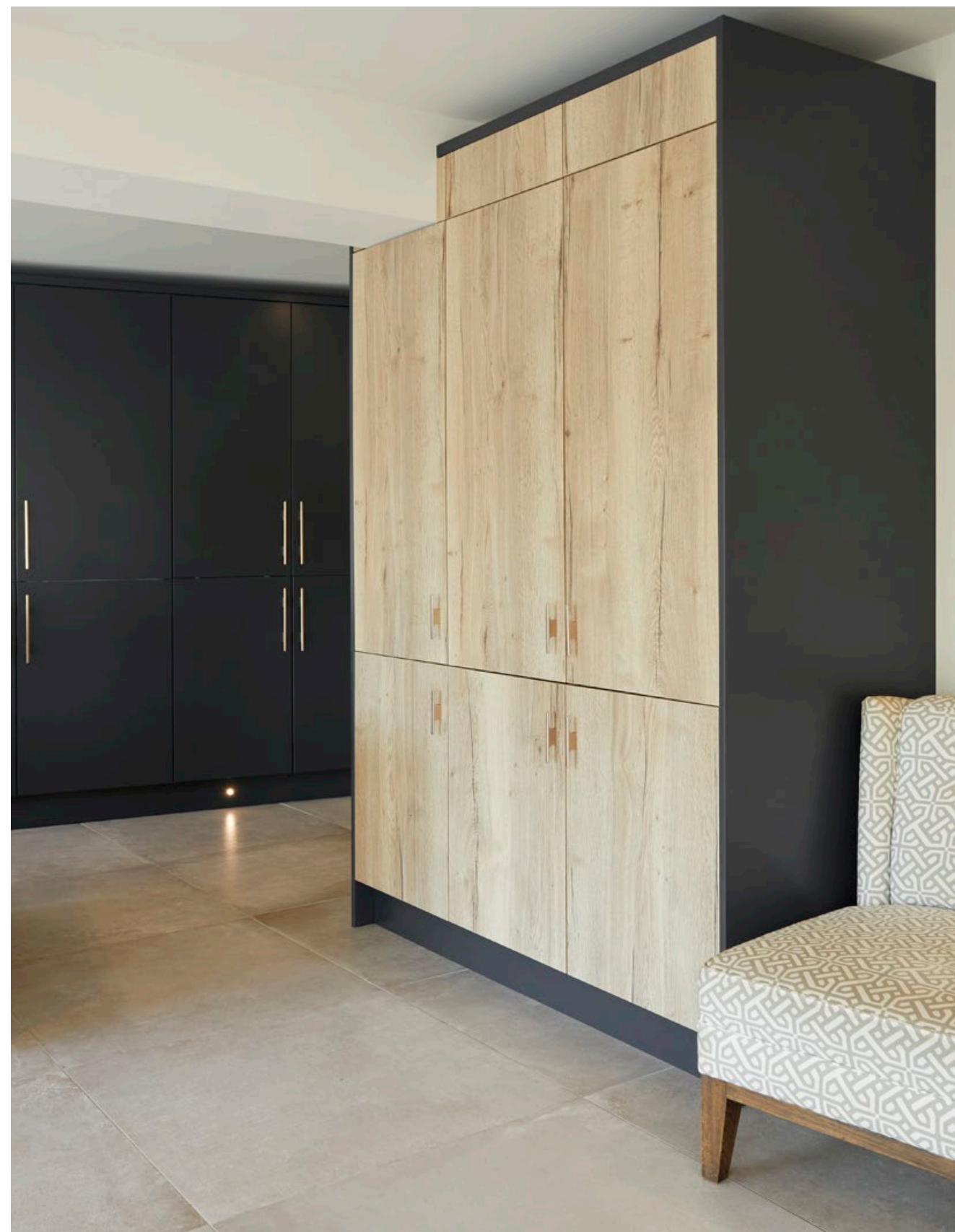


Oblique Painted White
& New England Oak



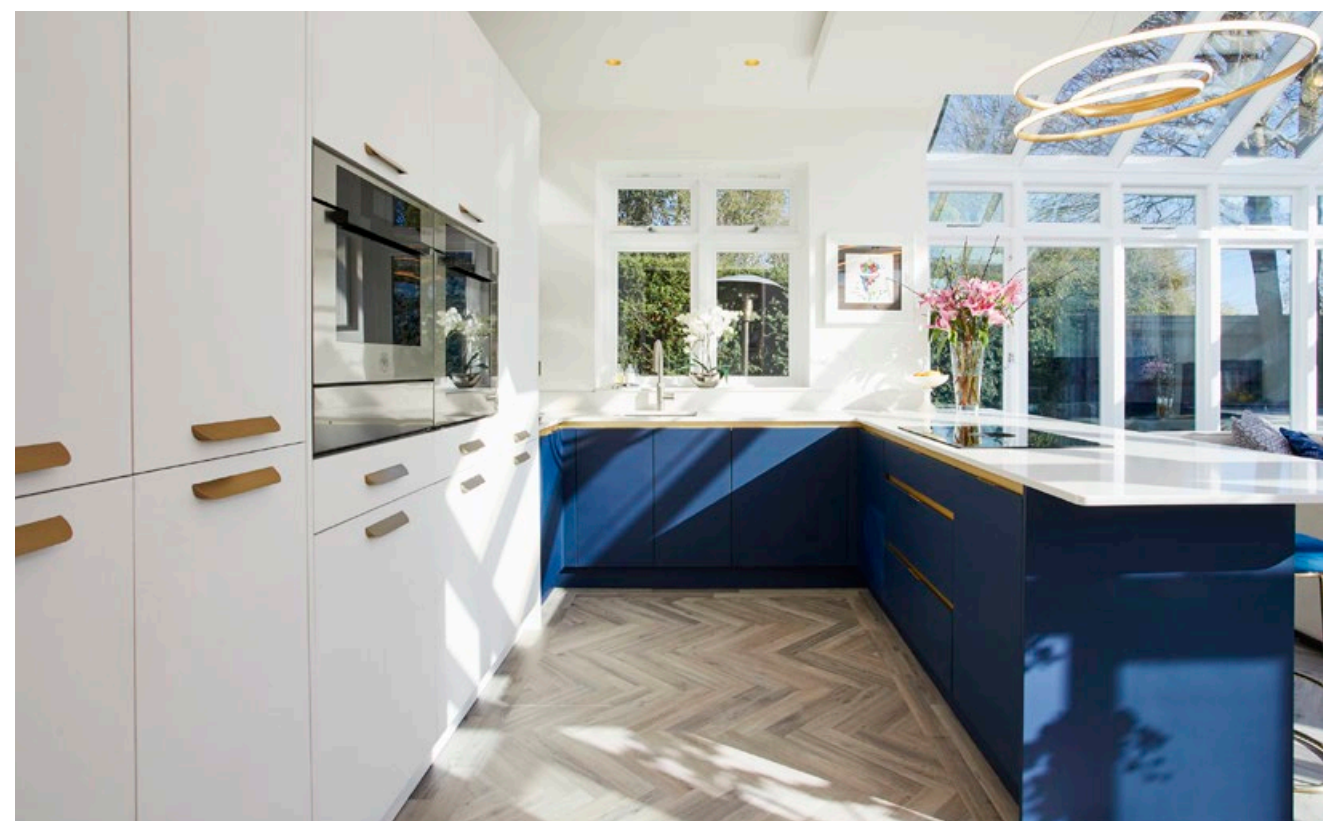
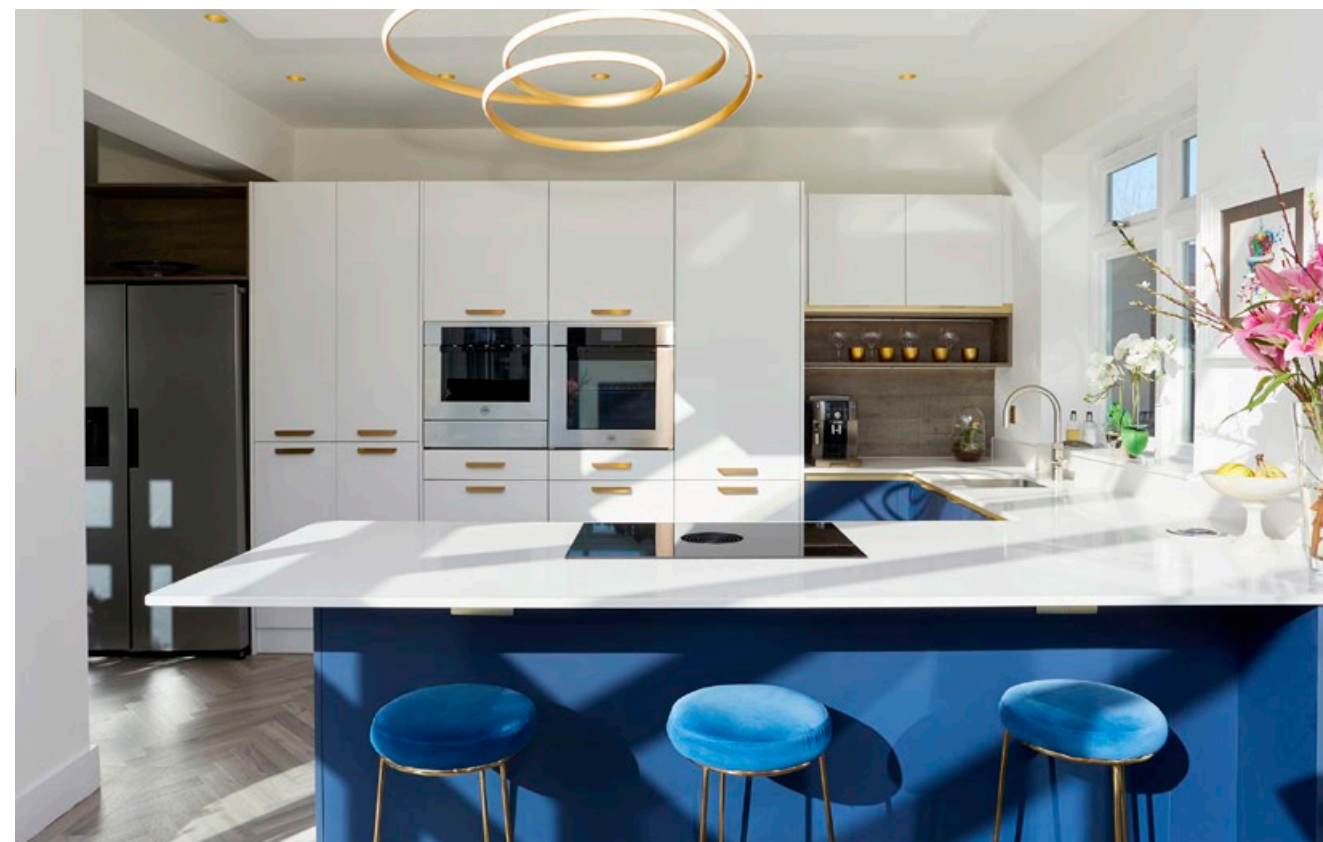


Setosa Painted Anthracite
& New England Oak





Super Matt Marine
& Quartz



Discover a range of clever features, from breakfast pantries to chef's pantries, larders, or a stylish bar area. Embrace the simplicity of open shelving, and seamlessly transition from the kitchen to a functional boot room. Create cherished moments in a dedicated dining area. Let these features inspire your dream kitchen – a space designed for both elegance and everyday ease.



CLICK OR SCAN HERE

Book a free design consultation

Kitchens Features





Full Height Wine Cooler



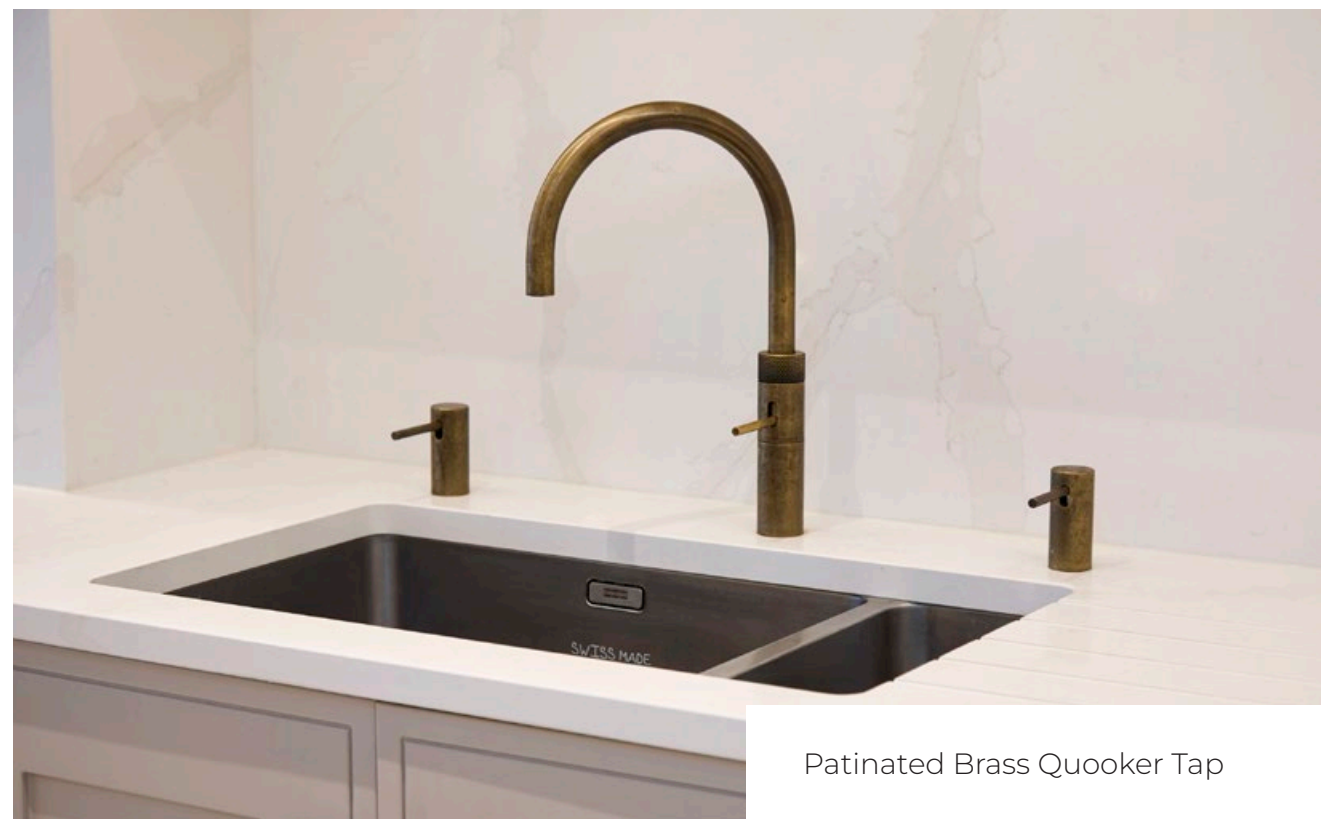
Kaelo Integrated
Wine Cooler



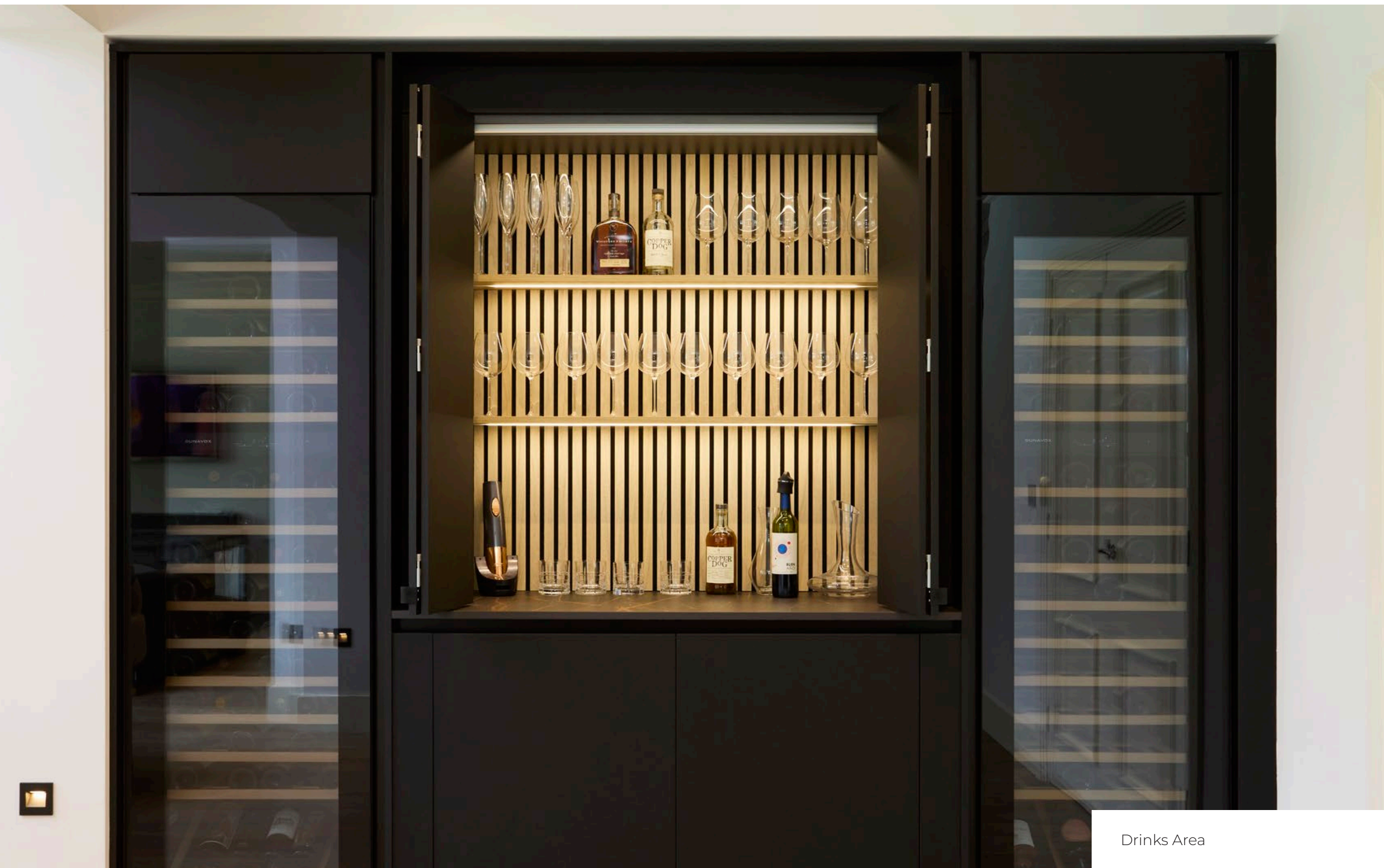
Console Cabinet



Built in window seat



Patinated Brass Quooker Tap



Drinks Area



Pull out larder



Bifold Pantry



S-Box Pop-up Socket



Tandem Larder



LeMans Corner Pantry



Boot Room



Dining Area



Chefs Pantry



Bar Area



Bifold Pantry



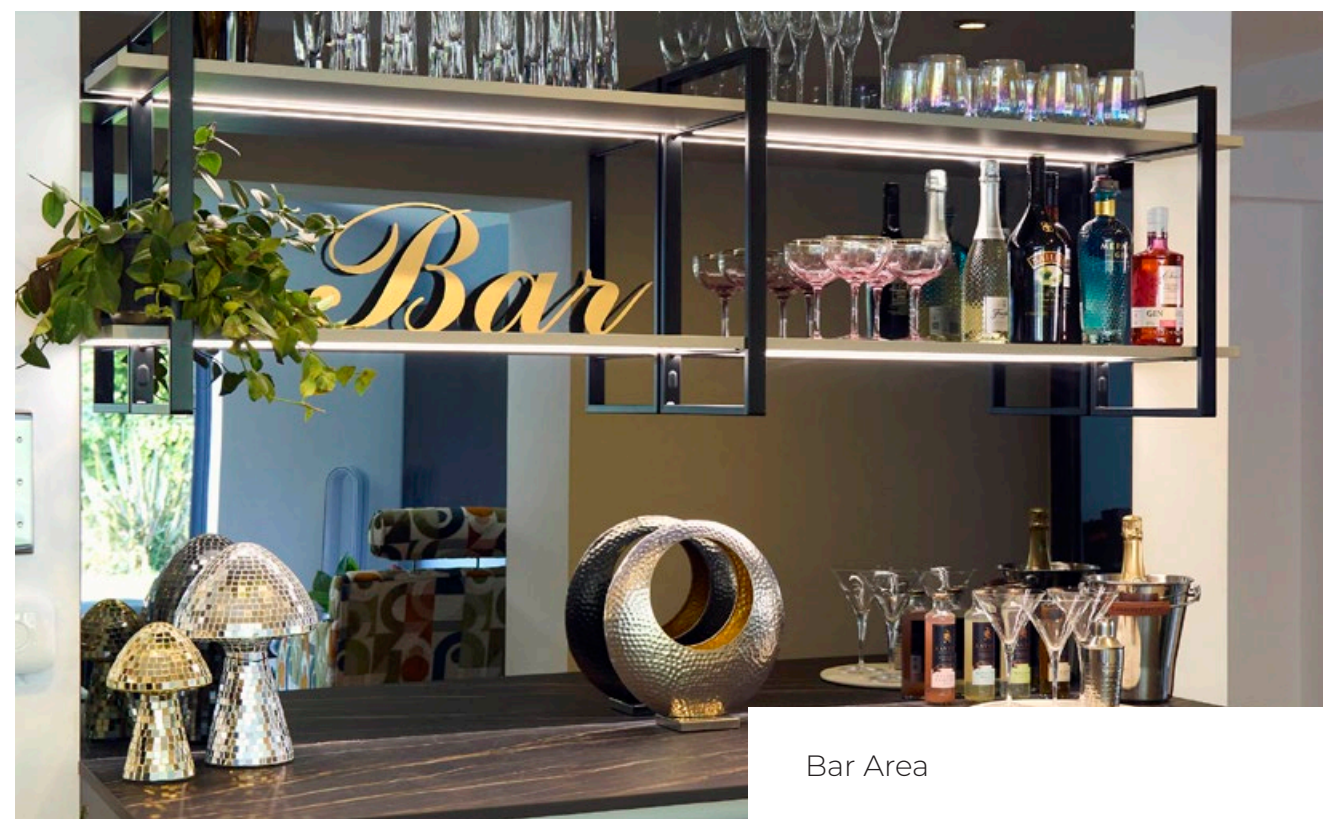
Walk in Pantry



Breakfast Pantry



Neff Glass Draft



Bar Area

Ashford Kitchens & Interiors

Ashford
Kitchens & Interiors

Appliances

Inspiring Design | Exceptional Results

Ashford
Kitchens & Interiors

Monday - Saturday

9.30am - 5pm

01753 642362

www.ashfordinteriors.co.uk

Kitchens

Bedrooms

Home Office

Bespoke Interiors for Every Room

Our expertise extends far beyond kitchens. Want to upgrade other parts of your home? We design and install stunning fitted wardrobes, walk-in wardrobes, and dressing rooms tailored to your style and needs. Transform your home with bespoke interiors, including functional home offices, stylish media centres, elegant bar areas, and practical boot rooms. Visit our showroom or speak to our team to discover how we can help create beautifully designed spaces throughout your home.



CLICK OR SCAN HERE

Home Living Solutions





Kitchens | Bedrooms | Home Living